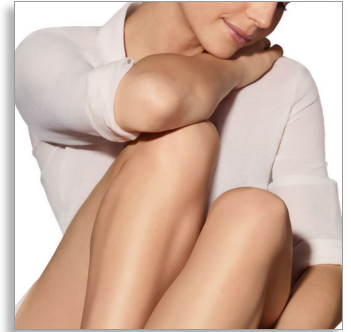




Philips Lumea Essential IPL hair removal system

For use on body and face

15 minutes to treat lower legs
Lifetime >100.000 light pulses
Extra long cord



SC1996/00



The ideal way to prevent hair regrowth

for smooth skin at home

Philips Lumea IPL works wonders to prevent the reappearance of hair on body and face. Gentle pulses of light, applied regularly, keep skin silky-smooth every day.

Long lasting smoothness

- Enjoy smooth skin every day
- Effortlessly effective

Hair removal with IPL technology

- Adapted for safe and effective use in your own home

Safe, fast and effective on the body and face

- Five adjustable light energy settings
- Integrated skin tone sensor for extra safety
- Precision attachment for extra safety on the face
- Body attachment: fast treatment (15 min. for 2 lower legs)

Easy to use

- Slide and Flash mode for a more convenient application
- Adjustable to your skin type
- No replacement parts, no hidden costs

PHILIPS

IPL hair removal system

For use on body and face 15 minutes to treat lower legs, Lifetime >100.000 light pulses, Extra long cord

Highlights

Enjoy smooth skin every day



Philips Lumea applies gentle pulses of light to the hair root. This results in the hair shedding naturally and hair regrowth is inhibited. Repeating this treatment regularly will keep your skin smooth everyday.

Effortlessly effective

Our clinical studies have shown significant hair reduction in as little as four bi-weekly treatments resulting with smooth hair free skin. To maintain these results, simply repeat the treatment when needed. Time between treatments may vary based on your individual hair regrowth.

IPL technology

Philips Lumea uses an innovative light-based technology called IPL (Intense Pulsed Light), derived from the technology used in professional beauty salons. Philips has adapted this technology for safe and effective use in the comfort of your own home. Philips worked closely with leading dermatologists to develop our breakthrough hair removal system. For more than 10 years we carried out extensive consumer research with more than 2000 volunteers.

Big body attachment, 4cm²



Big body attachment enables fast treatment on large areas like legs.

Precision attachment, 2cm²

With the additional integrated light filter, it can be used for safe treatment of facial hair on the upper lip, chin, cheeks and other sensitive areas.

Suitable hair and skin types

Geeignete Haar- und Hauttypen / Types de peau et de poils adaptés		Die integrierte Hauttöne-Sensor prüft die Bestimmtheit des dunkelsten Hauttones de Le niveau de couleur de peau détecté et adapte le traitement sur les poils les plus foncés.				
Haarfarbe / Couleur de la peau		1	2	3	4	5
Farbe des Körperhairs / Couleur des poils	1	●	●	●	●	○
	2	●	●	●	●	○
	3	●	●	●	●	○
	4	●	●	●	●	○
5	○	○	○	○	○	

● Dieses Produkt ist für Sie geeignet.
Ce produit vous convient.

○ Dieses Produkt ist für Ihren Haar- und Hauttyp nicht geeignet.
Ce produit est inadapté à votre couleur de peau et à votre type de poils.
Folien für weitere Infos.

Philips Lumea works effectively on (naturally) dark blonde, brown and black hairs. As with other light-based treatments, Philips Lumea is NOT effective on red, light-blonde or white/grey hair. Philips Lumea is also NOT suitable for dark skin.

Skin Tone Sensor

For extra safety the integrated Skin Tone Sensor measures the treated skin complexion at the beginning of each session and occasionally during the session. If it detects a

SC1996/00

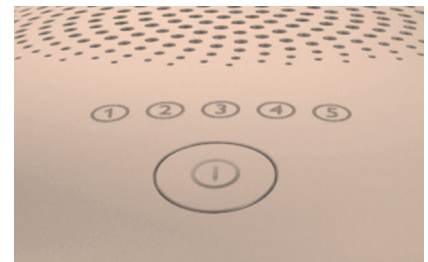
skin tone that is too dark for Lumea Essential it will automatically stop emitting pulses.

Slide and Flash mode



Main application mode enables sliding motion for more convenient and continuous application.

5 light energy settings



Philips Lumea has five adjustable light energy settings to ensure gentle but effective treatment. Used correctly, Philips Lumea's IPL treatment is safe and gentle to use even on sensitive skin and sensitive body areas.

No replacement parts needed

Philips Lumea is a complete solution that comes ready to work straight out of the box. More importantly, it does not require any replacement lamps or gels.

Specifications

Technical specifications

- Light spectrum: Precision attachment > 600nm, Body attachment: >525 nm
- High performance lamp: Delivers > 100,000 flashes
- Light fluence (J/cm²): Body attachment: 2.5-5, Precision attachment: 2.5-4.5

Safety and adjustable settings

- Integrated UV filter: Protects skin from UV light
- 5 light energy settings: Adjustable to your skin type
- Integrated safety system: Prevent unintentional flashing
- Skin Tone Sensor: Detects your skin tone

Application areas

- Body areas: Arms, Legs, Belly, Bikini, Armpits
- Face areas: Chin, Sideburns, Upper lip

Attachments

- Precision attachment (2cm²): For use below the eyes
- Body attachment (4cm²): For use below the neckline

Application time

- Slide and Flash: For convenient application
- Lower leg: 8min
- Armpit: 1 min
- Bikini line: 1 min
- Face areas: 1 min

Items included

- Instructions for use: Quick Start Guide, User manual
- Storage: Pouch
- Adapter: 24V / 1500mA

Power

- Voltage: 100-240 V
- Corded use

Service

- Warranty: 2 years global warranty

Application mode

- Corded / cordless use: Corded

