



Philips
Straightener

Essential Care
Ceramic



HP8319/00

Easy straight and shine

with 100mm long plates

Specially designed for speed and ease of use, the longer plates of the new Essential Care straightener allow you to get the straight look you want faster, while being gentle on your hair.

Beautifully styled hair

- Long plates for fast and easy straightening
- 210°C professional high heat for perfect results

Less hair damage

- Ceramic coating for ultra-smooth gliding

Ease of use

- Closing lock to close the handle for easy and safe storage
- 1.8 m power cord
- Fast heat up time, ready to use in 60 seconds
- Universal voltage
- Swivel cord to prevent tangled wires
- 2 years of worldwide guarantee



asimpleswitch.com

PHILIPS

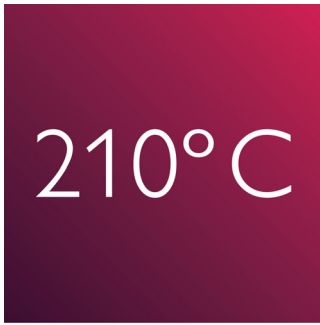
Highlights

Long plates



The longer plates enable a better contact with the hair and help you achieve perfect straightening results in less time.

210°C professional temperature



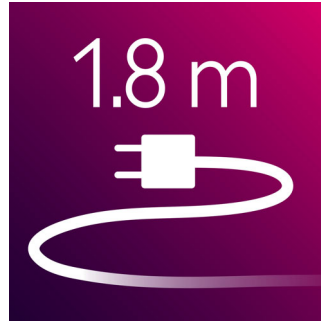
This high temperature enables you to change the shape of your hair and gives you that perfect look you want.

Instant heat up



The straightener has a fast heat up time, being ready to use in 60 seconds

1.8 m cord



1.8 m power cord

Handle closing lock



The straightener has an closing lock mechanism. Located at the base of the straightener, this locks plates, making storage quick and easy and helping to protect the straightener from accidental damage.

Universal voltage



Worldwide voltage for getting the perfect travel companion

Swivel cord

Useful swivel cord technology rotates the cord to prevent tangled wires.

2 years guarantee



2 years of worldwide guarantee.

Ceramic coating



The smooth ceramic coated plates prevent damage to your hair during styling.



Philips Green Logo

Philips Green Products can reduce costs, energy consumption and CO2 emissions. How? They offer a significant environmental improvement in one or more of the Philips Green Focal Areas – Energy efficiency, Packaging, Hazardous substances, Weight, Recycling and disposal and Lifetime reliability.

Specifications

Technical specifications

- Heating time: 60s
- Cord length: 1.8 m
- Color/finishing: black and silvertint
- Maximum temperature: 210 °C
- Long plates: 27x100mm
- Voltage: Worldwide V

Features

- Temperature: 210 °C

- Swivel cord
- Ceramic coating
- Ion conditioning: No
- Handle lock
- Material plates: Ceramic
- Storage hook
- Swivel cord

Service

- 2-year worldwide guarantee



Issue date 2013-12-18

Version: 4.1.1

© 2013 Koninklijke Philips N.V.
All Rights reserved.

Specifications are subject to change without notice.
Trademarks are the property of Koninklijke Philips N.V.
or their respective owners.

www.philips.com