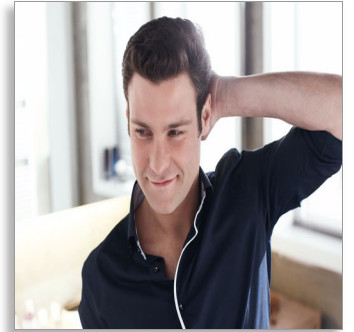




Philips  
hair clipper



QC5360

## Perfect Results

Get an even haircut every time with the contour-following comb of this Philips Hair Clipper. The length settings are easy to select and lock into place. There are 11 length settings to choose from, ranging from 0.5mm to 21mm.

### Performance

- Superior cutting performance with titanium-coated blades

### Easy to use

- Pop-open head makes it easy to clean
- 2- year guarantee, worldwide voltage, no oil needed
- Battery light shows the battery status
- Up to 60 minutes of cordless power after an 8-hour charge

### Perfect Results

- 11 lock-in length settings from 0.5mm to 21mm
- Contour-following comb follows every curve of your head.



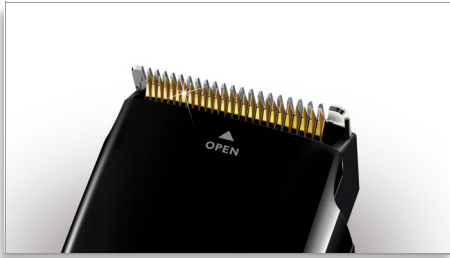
asimpleswitch.com

# PHILIPS

sense and simplicity

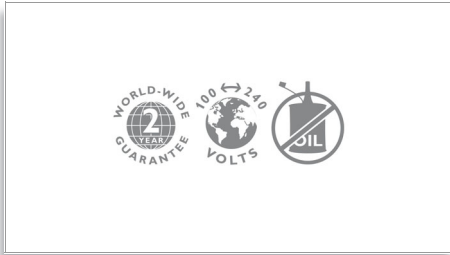
# Highlights

## Titanium blades



Advanced titanium blades for superior cutting performance and long-lasting sharpness

## Built to last



All of our grooming products are built to last. They come with a 2 year worldwide guarantee, worldwide voltage compatibility, and they never need to be oiled.

## Easy to clean



Simply pop the head open and use the included cleaning brush to sweep away the loose hairs.

## 11 lock-in length settings



The adjustable comb provides length settings from 3mm to 21 mm, with precisely 2mm between each

length. Or you can use it without a comb for a close 0.5mm trim.

## Battery light



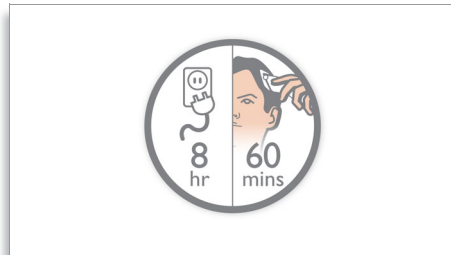
Battery light glows green when full.

## Follows every curve



The hair clipper gently follows the contours of your head for a fast, even and comfortable haircut.

## NiMH batteries



Use with or without cord for flexibility. The powerful NiMH batteries last for up to 60 minutes after an 8 hour charge.

# Specifications

## Service

- 2-year worldwide guarantee

## Accessories

- Cleaning brush

## Cutting system

- Cutter material: Stainless steel with titanium coating
- Cutter width: 41 mm
- Number of length settings: 11
- Range of length settings: 0.5-21 mm
- Precision (size of steps): by 2 mm
- Maintenance free - No Oil needed

## Design

- Easy grip: Side panels
- Shape: Ergonomic

## Ease of use

- Easy open hair chamber: Brush out hairs
- Display: Charging indicator
- Expert 2D comb

## Power system

- Battery type: Ni-MH
- Charging time: 8 hours
- Running time: up to 60 minutes



Issue date 2013-05-04

Version: 7.0.1

© 2013 Koninklijke Philips Electronics N.V.  
All Rights reserved.

Specifications are subject to change without notice.  
Trademarks are the property of Koninklijke Philips  
Electronics N.V. or their respective owners.

[www.philips.com](http://www.philips.com)