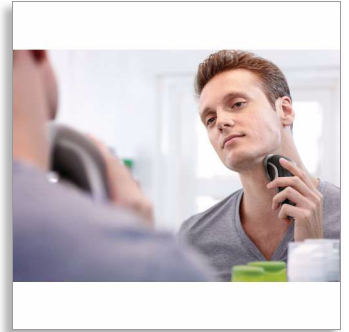




Philips 6000 series  
Electric shaver

- Quick charge



HQ6996



## Close and easy

Electric shaver with CloseCut system

A close and comfortable shave for an affordable price. The Reflex Action system of this Philips shaver is combined with the CloseCut system, guaranteeing a close and comfortable shave.

### Comfortably close

- CloseCut blades for close, efficient shaving
- Replacement heads

### Adjusts to every curve of your face and neck

- Reflex Action system

### Moustache and sideburn trimming

- Pop-up trimmer

### Easy grip

- Ergonomically designed grip for easy handling

Electric shaver  
Quick charge

# Specifications

## Shaving Performance

- Shaving System: CloseCut
- Contour-following: Reflex Action system, Individual floating heads

## Ease of use

- Charging: 1 hour
- Charging: Corded/cordless, Charging indicator

## Accessories

- Maintenance: Cleaning brush, Protection cap

## Power

- Automatic voltage: 100-240 V
- Run time: 30 min

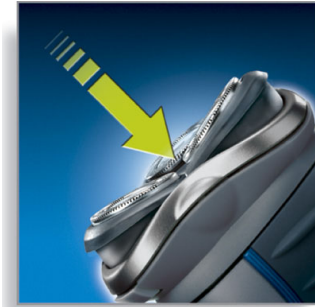
## Service

- Replacement head: Replace every 2 yrs with HQ56

HQ6996/16

# Highlights

## Reflex Action system



Automatically adjusts to every curve of your face and neck.

## Pop-up trimmer

Full width, pop-up trimmer is perfect for grooming sideburns and moustache.

## Easy grip for optimal handling



This ergonomically designed grip enables easy handling for a comfortable shave.

## CloseCut blades

CloseCut blades are precision-engineered to give you a reliably close, quick shave every time

## Replacement heads

For maximum performance replace your shaving heads every two years with HQ56



Issue date 2013-05-09

Version: 2.0.1

© 2013 Koninklijke Philips Electronics N.V.  
All Rights reserved.

Specifications are subject to change without notice.  
Trademarks are the property of Koninklijke Philips  
Electronics N.V. or their respective owners.

[www.philips.com](http://www.philips.com)