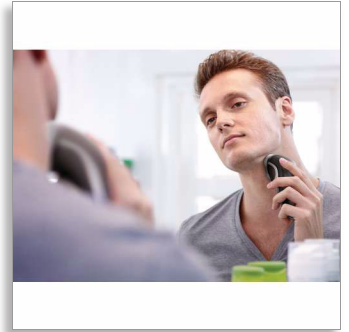




Philips 6000 series
Electric shaver

Mains version



HQ6946



Close and easy

A close and comfortable shave for an affordable price. The Reflex Action system is combined with the CloseCut system, guaranteeing a close and comfortable shave.

Comfortably close

- CloseCut blades for close, efficient shaving
- Replacement heads

Adjusts to every curve of your face and neck

- Reflex Action system

Moustache and sideburn trimming

- Pop-up trimmer

Easy grip

- Ergonomically designed grip for easy handling



asimpleswitch.com

PHILIPS

sense and simplicity

Specifications

Shaving Performance

- Shaving System: CloseCut
- Contour-following: Reflex Action system, Individual floating heads

Ease of use

- Charging: Corded

Accessories

- Maintenance: Cleaning brush, Protection cap

Power

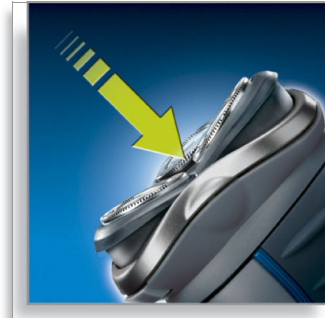
- Automatic voltage: 100-240 V

Service

- Replacement head: Replace every 2 yrs with HQ56

Highlights

Reflex Action system



Automatically adjusts to every curve of your face and neck.

Pop-up trimmer

Full width, pop-up trimmer is perfect for grooming sideburns and moustache.

Easy grip for optimal handling



This ergonomically designed grip enables easy handling for a comfortable shave.

CloseCut blades

CloseCut blades are precision-engineered to give you a reliably close, quick shave every time

Replacement heads

For maximum performance replace your shaving heads every two years with HQ56

