



Philips Care
Airstyler

More Volume with Care

Drying your hair with care

Dry & style at once - the new Philips Care airstyler allows you to create beautiful natural hair styles, whilst providing maximum care for your hair. The unique volumizer creates volume in the hair, just where you want it - right at the roots.



HP8655

Beautifully styled hair

- 1000W for beautiful results
- 38mm thermo brush to smoothen your hair
- Retractable bristle brush for easy curling
- Narrow concentrator for focused airflow
- Three flexible settings for more control
- Volumizer for more volume at the roots

Easy to use

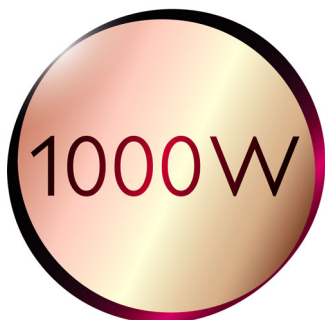
- Swivel cord to prevent tangled wires
- 2 m cord for ease of use

Less Hair Damage

- Ceramic coated brushes for more care
- Cool air setting for gentle drying
- More Care with ion conditioning for shiny, frizz-free hair
- Best drying temperature with ThermoProtect temperature

Highlights

1000W



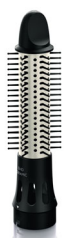
This 1000W hairdryer creates the optimum level of airflow and gentle drying power, for beautiful results every day.

38mm thermo brush



The thermo brush has an extra wide diameter of 38mm. The width of the barrel makes it the perfect styling tool for creating smooth styles and waves.

Retractable bristle brush



This easy to use airstyler is both a styling brush and curler in one. The bristles retract into the brush at the touch of a button, so you can easily slide the styler out of your hair. What's left is a beautiful bouncy curl.

Narrow concentrator



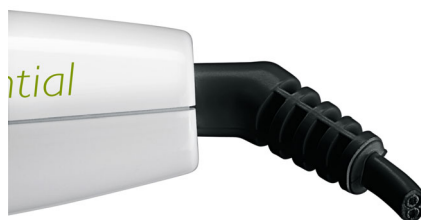
The concentrator works by focusing the flow of air through the opening onto specific areas. This results in precise styling and is great for touch ups or to finish a style.

Volumizer



The unique and innovative volumizer let's you create volume just where you want it - at the roots.

Swivel cord

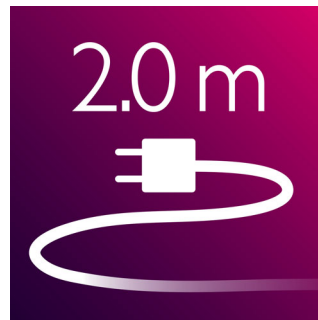


Useful swivel cord technology rotates the cord to prevent tangled wires.

Three flexible settings

The speed and heat required can be easily adjusted to create the perfect end result. Three flexible settings ensure precise and tailored styling.

2 m cord



The long cord gives you maximum flexibility.

Ionic Care



Ionic conditioning enables anti-static drying. Charged negative ions eliminate static hair, condition the hair and smooth down the hair cuticles to intensify the hair's shine and glossiness. The result is smooth and frizz-free hair that shines beautifully.



asimpleswitch.com

Philips Green Logo

Philips Green Products can reduce costs, energy consumption and CO2 emissions. How? They offer a significant environmental improvement in one or more of the Philips Green Focal Areas – Energy efficiency, Packaging, Hazardous substances, Weight, Recycling and disposal and Lifetime reliability.

Specifications

Technical specifications

- Voltage: 220-240 V
- Wattage: 1000 W

Attachments

- Nozzle: For a focused airflow
- Retractable bristle brush: For tangle free waves & curls
- Thermobrush: For smoothing and for waves
- Volumizer: For volume at the roots

Caring technologies

- Ceramic coating of brushes
- Ion technology
- Thermoprotect

Ease of use

- Cable length: 2m
- Storage hook



Issue date 2013-05-18

Version: 2.0.1

© 2013 Koninklijke Philips N.V.
All Rights reserved.

Specifications are subject to change without notice.
Trademarks are the property of Koninklijke Philips N.V.
or their respective owners.

www.philips.com