

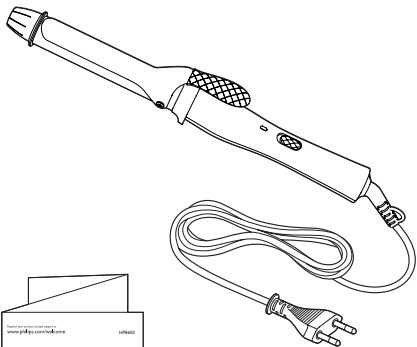
Register your product and get support at
www.philips.com/welcome

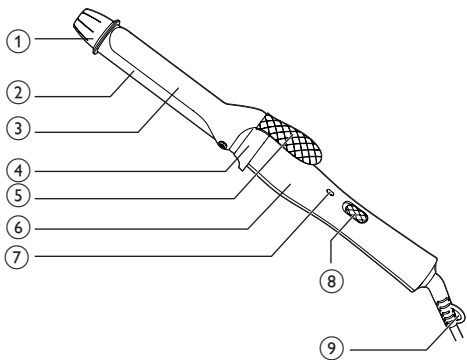
HP8602

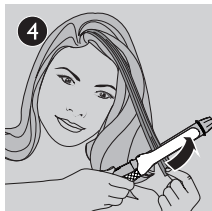
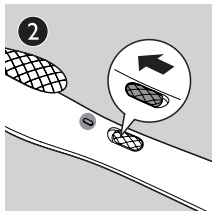
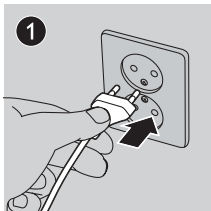


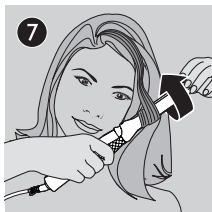
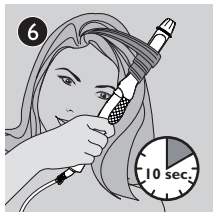
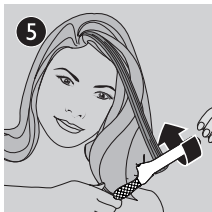
EN User manual

PHILIPS









1 Congratulations

Congratulations on your purchase, and welcome to Philips! To fully benefit from the support that Philips offers, register your product at www.philips.com/welcome.

2 Introduction


CurlCeramic curler with 16 mm barrel helps you easily achieve vivid, bouncy curls and ringlets for joyful and young look. Protective ceramic coating ensures even heat distribution and less hair damage. Top temperature of 190 °C guarantees optimal result while minimizing hair damage. We hope you will enjoy using your **CurlCeramic**.

3 Important

Read this user manual carefully before you use the appliance and save it for future reference.

- This appliance can be used by children aged from 8 years and above and persons with reduced physical, sensory or mental capabilities or lack of experience and knowledge if they have been given supervision or instruction concerning use of the appliance in a safe way and understand the hazards involved. Children shall not play with the appliance. Cleaning

and user maintenance shall not be made by children without supervision.

- Children should be supervised to ensure that they do not play with the appliance.
- If the mains cord is damaged, you must have it replaced by Philips, a service centre authorized by Philips or similarly qualified persons in order to avoid a hazard.
- **WARNING:** Keep this appliance away from water. Do not use it near or over water contained in baths, washbasins, sinks etc. When you use the appliance in a bathroom, unplug it after use. The proximity of water presents a risk, even when the appliance is switched off. 
- Check if the voltage indicated on the appliance corresponds to the local mains voltage before you connect the appliance.
- Check the condition of the mains cord regularly. Do not use the appliance if the plug, the cord or the appliance itself is damaged.
- For additional protection, we advise you to install a residual current device (RCD) in the electrical circuit that supplies the bathroom. This RCD must have a rated

residual operating current not higher than 30mA. Ask your installer for advice.

- The barrel of this appliance becomes hot during use. Prevent contact with the skin.
- Prevent the mains cord from coming into contact with the hot parts of the appliance.
- Only use the appliance on dry hair.
- Always unplug the appliance after use.
- Wait until the appliance has cooled down before you store it.
- Keep the barrel clean and free of dust and styling products such as mousse, spray and gel. Never use the appliance in combination with styling products.
- Always return the appliance to a service centre authorized by Philips for examination or repair. Repair by unqualified people could cause an extremely hazardous situation for the user.
- The barrel has a ceramic coating. This coating slowly wears away over time. This does not affect the performance of the appliance.
- Keep the appliance away from flammable objects and materials when it is switched on.
- Never cover the appliance with anything (e.g. a towel or clothing) when it is hot.
- Never leave the appliance unattended when it is plugged in.
- If the appliance is used on colour-treated hair, the barrel may stain.
- This appliance is extremely hot, pay full attention when using this appliance.
- Only hold the handle while the unit is plugged in, other parts are hot.
- Before use it in artificial hair, always consult their distributor.
- Do not operate the appliance with wet hands.
- Always place the appliance with the stand on a heat-resistance, stable flat surface. The hot barrel should never touch the surface or other flammable material.

Electromagnetic fields (EMF)

This appliance complies with all standards regarding electromagnetic fields (EMF). If handled properly and according to the instructions in this user manual, the appliance is safe to use based on scientific evidence available today.

Environment

Do not throw away the appliance with the normal household waste at the end of its life, but hand it in an official collection point for recycling. By doing this, you help to preserve the environment.



4 Curl your hair

- 1 Connect the plug to a power supply socket.
- 2 Slide the on/off switch (⑧) to I to switch on the appliance.
 - ↳ The power-on indicator (⑦) lights up and starts blinking.
 - ↳ When the appliance is ready for use, the indicator (⑦) stops blinking.
- 3 Before you start curling, comb your hair and divide your hair into small sections. Press the lever (⑤) and place a section of hair between the barrel (②) and clip (③).
- 4 Close the clip by releasing the lever and slide the barrel to the hair tip.
- 5 Hold the cool tip (①) and the handle (⑥) of the curling iron, and then wind the section of hair around the barrel from tip to root by rotating the curler.
- 6 Hold the curling iron in the position for max. 10 seconds.

Note

- Do not pull at the curler when you unwind the section, otherwise you would straighten the curl.

7 Unwind the section of hair until you can open the clip again with the lever.

8 Release the curled hair.

To curl the rest of your hair, repeat steps 3 to 8.

You may curl your hair both from inside out or from outside in as you like.

After use:

1 Switch off the appliance and unplug it.

2 Place it on the resting stand (④) until it cools down. To place it on a heat-resistant surface is highly recommended.

3 Remove hairs and dust from the barrel and clip.

4 Clean the barrel and the clip with damp cloth.

5 Keep it in a safe and dry place, free of dust. You can also hang it with the hanging loop (⑨).

5 Guarantee and service

If you need information or if you have a problem, please visit the Philips website at www.philips.com or contact the Philips Customer Care Centre in your country (you find its phone number in the worldwide guarantee leaflet). If there is no Consumer Care Centre in your country, go to your local Philips dealer or contact the Service Department of Philips Domestic Appliances and Personal Care BV.

6 Troubleshooting

If problems should arise with your curler and you cannot solve them with the information below, please contact the nearest Philips service centre or the Philips Customer Care Centre in your country.

Problem	Cause	Solution
The appliance does not work at all.	The power socket to which the appliance has been connected may not live.	Ensure the socket is live.
	The mains cord of the appliance may be damaged.	If the mains cord is damaged, you must have it replaced by Philips, a service centre authorised by Philips or similarly qualified persons in order to avoid a hazard.



All registered and unregistered trademarks are property of their respective owners.

© 2012 Koninklijke Philips Electronics N.V.

All rights reserved.

3140 035 28192

