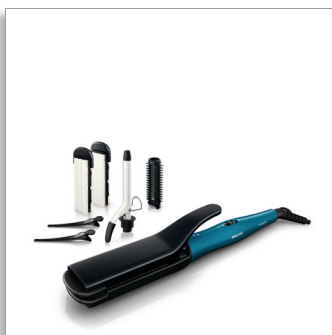




Philips  
Multi-Styler

6-in-1



HP8698/00

## Instant creativity, constant care

Philips Multi-Styler gives you versatility to create the latest style for every occasion while caring for your hair.

### Beautifully styled hair

- 16mm tong and brush sleeve; flat and crimper plates; 2 clips
- 190°C styling temperature for long lasting result

### Less damage

- Ceramic coating on every heat attachment

### Ease of use

- Auto shut-off function after 60 min
- It takes only few minutes for styler to be ready to use.
- Pouch for easy storage
- Ready to use LED indicator

**PHILIPS**  
sense and simplicity

## Highlights

### 6 piece hairstyler set



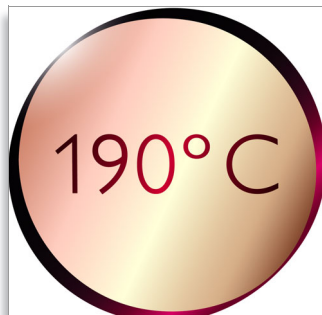
Philips Multi-styler contains: 16mm curling tong for ringlets; brush sleeve for 16mm tong to create additional volume; crimper with 2-in-1 convertible flat and crimper plates for straight and crimped look; two hair clips for easier styling.

### Ceramic coating



for better care of your hair.

### 190°C styling temperature



190°C styling temperature secures long lasting result while minimizing risk of hair damage.

### Auto shut-off function



The automatic shut-off feature has been designed to provide peace of mind. If left on, the curler will automatically switch off after 60 min.

### Fast heat up time

It takes only few minutes for styler to be ready to use.

### Ready to use indicator

LED light stops blinking when the styler is ready to use.

### Pouch

Pouch for easy storage

## Specifications

### Accessories

- Pouch

### Technical specifications

- Barrel diameter: 16 mm, 22 mm
- Heater type: PTC
- Heat up time: 3 min
- Cord length: 1.8 m
- Voltage: Universal

### Features

- Auto shut-off: after 60 min
- Swivel cord

