

Philips
Straightener

HP8309



Straight hair made easy

SalonStraight Essential

Straighten your hair with this easy to use straightener

Ease of use

- Swivel cord to prevent tangled wires
- Dual voltage for worldwide use
- Instant heat: ready to use within 30 seconds
- 1.8m power cord

Beautifully styled hair

- Ceramic plates for smooth gliding and shiny hair
- 210°C professional high heat for perfect salon results

2 years guarantee

- 2 years of world wide guarantee

PHILIPS
sense and simplicity

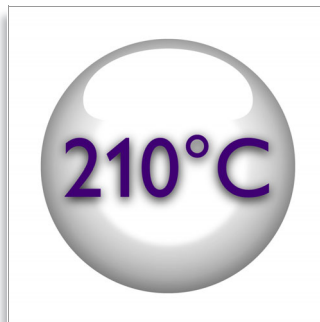
Highlights

1.8m cord



1.8m power cord

210°C professional temperature



This high temperature enables you change the shape of your hair, and gives you that perfect look like you've just come from the salon.

Ceramic plates



Ceramic is microscopically smooth and durable by nature, and is therefore one of the best materials for straightening plates. The plates glide effortlessly through your hair, giving you perfect shiny hair.

Dual voltage

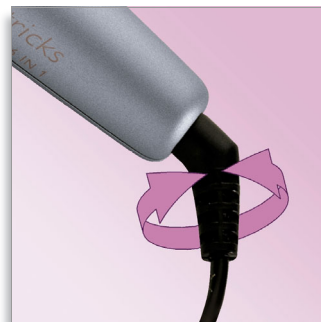


Dual voltage for worldwide use

Instant heat

Now more waiting around for your styler to heat up, this allows you to switch on and get styling.

Swivel cord



Useful swivel cord technology rotates the cord to prevent tangled wires.

2 years guarantee



2 years of world wide guarantee

Specifications

Features

- Temperature: 210 °C
- Ceramic coating
- Swivel cord

Technical data

- Cord length: 1.8 m
- Heater type: PTC



Issue date 2010-09-24

Version: 3.1.1

© 2010 Koninklijke Philips Electronics N.V.
All Rights reserved.

Specifications are subject to change without notice.
Trademarks are the property of Koninklijke Philips
Electronics N.V. or their respective owners.

www.philips.com