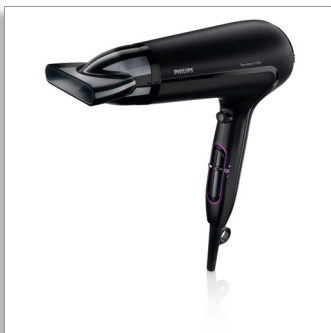




Philips ThermoProtect
Hairdryer

2100W



HP8230/00

Fast dry at a lower temperature with ThermoProtect

with 14mm styling nozzle

Protect your hair while still enjoying professional drying results. Choose from multiple heat and temperature settings to get the blow dry you want or select ThermoProtect for fast drying at a constant caring temperature.

Beautifully styled hair

- Professional 2100W for perfect salon results
- Cool Shot sets your style
- Perfect styling results with a slim styling nozzle
- Six flexible speed and temperature settings for full control

Less Hair Damage

- ThermoProtect temperature setting

Easy to use

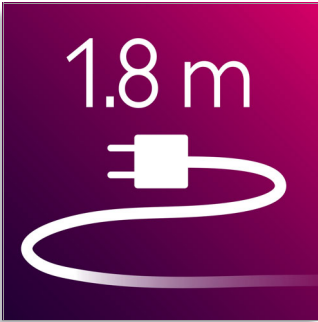
- Easy storage hook for convenient storage
- 1.8 m power cord
- Removeable air flow filter makes cleaning quick and easy

PHILIPS

sense and simplicity

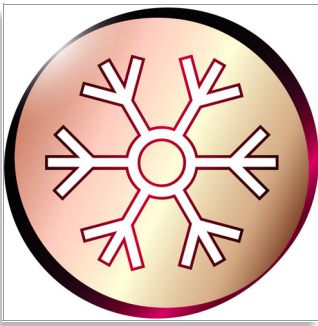
Highlights

1.8 m cord



Convenient to use thanks to the 1,8m power cord length.

Cool Shot



A must-have professional function, the Cool Shot button provides an intense burst of cold air. It is used after styling to finish and set the style.

Easy storage hook



The rubberised hook is located at the base of the handle and provides another storage

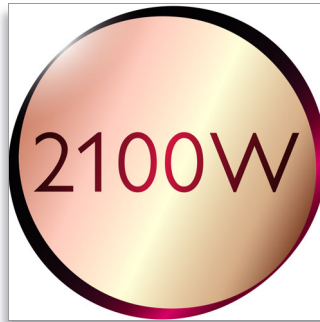
option, particularly convenient for use in the home or when staying at a hotel.

Slim styling nozzle



Perfect styling results and a shiny, polished look with a slim styling nozzle for precise styling.

Professional 2100W



This 2100W professional hairdryer creates a powerful airflow. The resulting combination of power and speed makes drying and styling your hair quicker and easier.

Removeable air inlet filter

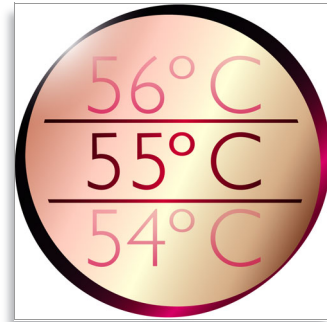
The removeable air flow filter of your hairdryer is easy to maintain. Simply click off to clean. Doing this regularly will prevent build up of dust and hair that can affect drying performance.

Speed and temperature settings



The speed and heat required can be easily adjusted to create the perfect style. Six different settings ensure full control for precise and tailored styling.

ThermoProtect temperature



The ThermoProtect temperature provides the optimal drying temperature and gives additional protection from overheating the hair. With the same powerful airflow, you will get the best results in a caring way.

Specifications

Technical specifications

- Voltage: 220-240 V
- Frequency: 50-60 Hz
- Wattage: 2100 W
- Power: 2100 W
- Color/finishing: High Gloss & Mat Black
- Housing material: --
- Motor: DC Motor
- Cord length: 1.8 m

Features

- Foldable handle: No
- Cool shot
- Dual voltage: No
- Travel pouch: No
- Ceramic coating: No

- Ion conditioning
- Hanging loop
- Diffuser: No
- Nozzle / Concentrator: Slim styling 14mm nozzle
- Number of attachments: 1

Service

- 2-year guarantee

Weight & dimensions

- A-Box Dimensions: Not known yet
- A-Box Weight: Not known yet
- F-Box Dimensions: Not known yet
- F-Box weight: Not known yet
- Product size: Not known yet
- Product weight (excl. pack): Not known yet



Issue date 2012-12-10

Version: 2.0.1

© 2012 Koninklijke Philips Electronics N.V.
All Rights reserved.

Specifications are subject to change without notice.
Trademarks are the property of Koninklijke Philips
Electronics N.V. or their respective owners.

www.philips.com