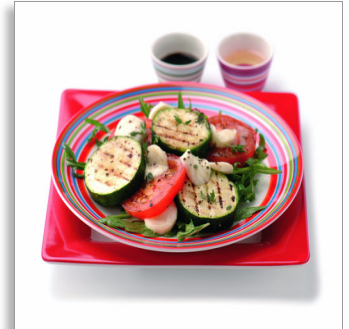




Philips
Health grill

Ribbed plate
2000 W



HD4407/20

Discover fuller flavours

Seal in the flavour with high temperature plates

This Philips health grill has high temperature plates to seal in all the juicy flavour. These heat up fast and keep a constant heat, for results you can trust, and can be used in a sloped or horizontal position for different cooking styles.

Discover fuller flavours

- High temperature grill plates seal in all the flavour
- Adjustable thermostat ensures perfect results for every food
- High power for heating up fast and keeping a constant heat

3 in 1 grill

- Multiple grilling positions: table, oven, contact grill
- Table grill position
- Oven position
- Contact grill position

Simplicity in use

- Non-stick grilling surface
- Dishwasher-safe parts
- Healthy sloped grill plates drain away fat into grease tray
- Easy to store upright



PHILIPS
sense and simplicity

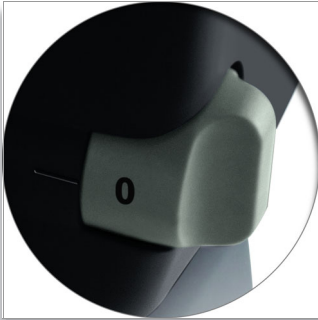
Highlights

High temperature grill plates



The high temperature of the grill plates seals in all the juices and flavour of the food. That's because the moment the food comes into contact with the surfaces of the grill, it begins to sizzle and brown, forming a tasty crust that keeps all the goodness and flavour inside, where it belongs.

Adjustable thermostat



Wide temperature range (70°C to 230°C) to choose the ideal temperature for each ingredient so that you ensure the perfect results for every food

Upright storage



Easy to store upright; tidy storage of cord and tray.

Dishwasher-safe parts



Dishwasher-safe parts make cleaning easy.

Multiple grilling positions



The grill can be used with the lid sealed, fully open or gratin, allowing you to prepare many different dishes.

1. The sealed position holds in all the flavour and is ideal for grilling meat, fish, vegetables or sandwiches.
2. The fully open position is like a mini-barbeque, perfect for table grilling, fun cooking or warming up your food.
3. The gratin position is suitable for melting cheese onto toast or vegetables such as tomato and courgette.

Grease drainage



The sloped position lets excess grease run off into the included grease tray, which is very healthy and ideal for meats and foods containing excess oil.

Specifications

General specifications

- Integrated on/off switch
- Temperature light
- Cool-touch handgrips
- Non-slip feet
- Cord storage
- Grease tray storage

Technical specifications

- Cord length: 1 m
- Power: 2000 W
- Voltage: 220-240 V
- Frequency: 50/60 Hz
- Grill plate dimensions (W x D): 319 x 223 mm

Design and finishing

- Color(s): Steel/black
- Materials: Steel housing / ALU plates / plastic parts

Weight and dimensions

- Product dimensions (W x H x D): 405 x 280 x 315 mm
- Weight appliance: 3.9 kg

