

PHILIPS



11-in-1 trimmer

All-in-One Trimmer 5000
Series

11-in-1: face, head and body
Self-sharpening steel blades
BeardSense technology



MG5923/15

One tool, complete styling

For face, hair and body

Our All-in-One trimmer has 11 quality tools designed for face, head and body, including self-sharpening blades that stay as sharp as they were on day 1, with no oil needed, for long-lasting performance.

Precise, even trim

- Keep unwanted nose and ear hair under control
- Clip your hair, your way

Versatile styling for face, head and body

- Powerful trimming even on the most demanding of beards
- 11 tools for all your grooming needs
- Maximum precision with long-lasting performance
- Add sharp and even definition to your final look
- Trim body hair efficiently.

Quality & Ease of use

- 100% showerproof for convenient grooming, wet or dry
- Powerful 4 week performance on a single charge*
- Stay aware for each shave and trim
- For more control and comfort while trimming

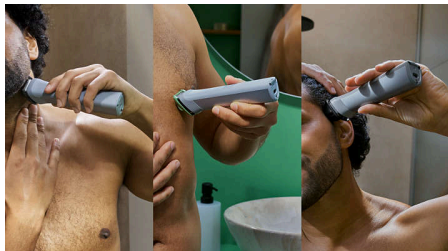
All-in-One Trimmer 5000 Series

11-in-1 trimmer

MG5923/15

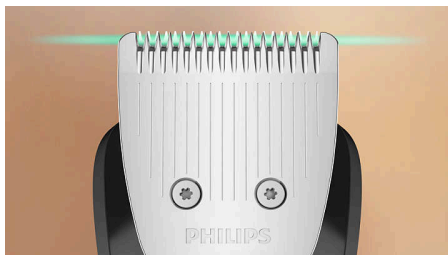
Highlights

11-in-1 trimmer



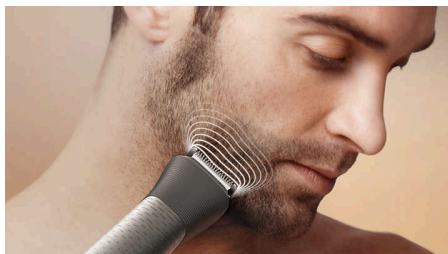
Our trimmer comes with 11 tools so you can trim and style your facial hair, clip your hair and groom your body, conveniently covering all your grooming needs.

Self-sharpening steel blades



Self-sharpening steel blades deliver added strength for maximum precision as you trim, staying as sharp as day 1 with no blade oil required.

BeardSense technology



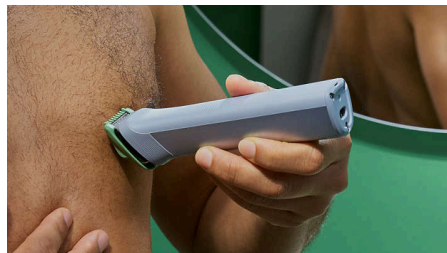
With BeardSense Technology, our trimmer scans your beard density 125 x per second to boost power in denser areas, giving you the right power for the best result.

Precision beard styling



The trimmer's multi-comb set comes with 11 length settings from 0.5 mm up to 16 mm in precise 1 mm increments, so you can style your beard long or short. The detail trimmer's narrow design also gives added precision to create sharp lines and fine details, while the metal trimmer cleans your cheeks, chin and neck to get your beard exactly how you like it.

Effective body grooming



Efficiently trim your body hair with the click-on body combs.

Easy hair clipping



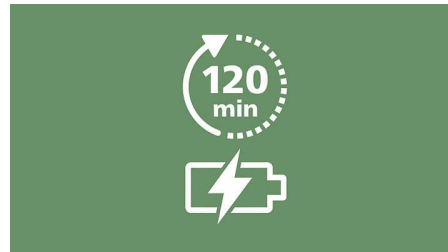
The trimmer's multi-comb system allows you to choose length settings from 0.5 mm to 16 mm to easily maintain your hairstyle at home.

Nose/ear trimming



The All-in-One trimmer is designed to remove unwanted nose and ear hair gently and comfortably, helping you avoid nicks and cuts.

Up to 120 minutes runtime



Our durable lithium battery delivers up to 120 minutes of runtime with a 5 minute quick-charge option**, for a powerful, continual trimming experience.

All-in-One Trimmer 5000 Series

11-in-1 trimmer

MG5923/15

Highlights

100% showerproof



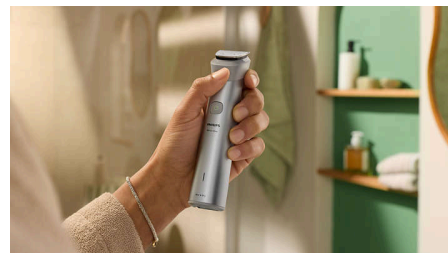
Being 100% showerproof, you can use the trimmer both wet and dry for a comfortable, convenient experience, every time. Plus it's easy to clean, too.

Battery life indicator



The battery indicator keeps you fully informed of your battery status, whether it's low, empty, fully charged or still charging, ensuring that you're always ready for your next grooming session.

Premium ergonomic grip



Our ergonomic grip makes the device easy to hold and manoeuvre, providing you with the superior comfort and control you need to perfect your look.

All-in-One Trimmer 5000 Series

11-in-1 trimmer

MG5923/15

Specifications

Power

Charging: 1 hour, USB-A Charging (5 V_{max} / ≥1 A)

Battery type: Lithium-ion

Run time: 120 minutes

Battery status: Charging indicator, Low battery indicator

Design

Handle: Premium Ergonomic grip

Finishing: Light grey

Service

Warranty: Up to 5 years***

Ease of use

Wet & Dry: 100% shower proof

Convenience: Cleaning brush, USB-A (no adapter included)

Travel and storage: Simple pouch

Summary

Body area: Face, Hair and Body

Tools and accessories: 11

Length settings: 0.5 – 16 mm, 11

Precision steps: Control up to 1 mm

Styling tools

Specialised: Metal trimmer, Nose trimmer, Detail trimmer, Self-sharpening blades, BeardSense technology

Combs

Adjustable: 3-7 mm

Hair: 9 mm, 12 mm, 16 mm

Body: 3 mm, 5 mm

Stubble: 1 mm, 2 mm

