

PHILIPS

Face + Body

OneBlade Pro

Rechargeable Li-Ion battery

12-length precision comb

Wet & Dry use

Battery indicator



QP6542/10

Trim edge & shave any length of hair

Designed to cut hair, not skin

Philips OneBlade Pro Face + Body trims, edges and shaves any length of hair. You get a blade for your face, and one with a skin guard for your body. Forget about using multiple tools. OneBlade does it all.

Easy to use

- Fully waterproof
- Click-on body comb (3 mm)
- Charge anytime, anywhere
- Blade that doesn't fade easily
- 90 min Li-Ion battery
- LED light shows battery status

Comfortable shave

- Unique OneBlade Technology
- Shave it off
- Click-on skin guard for sensitive areas

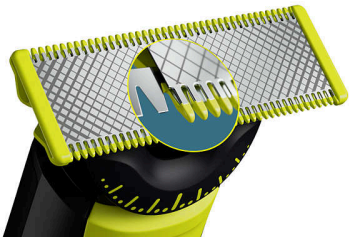
Sharp edges

- Edge it up
- Dual-sided blade: designed for precision and control

Even trim

Highlights

Unique OneBlade Technology



Philips OneBlade has a revolutionary technology designed for facial grooming. It can shave any length of hair. Its dual protection system - a glide coating combined with rounded tips - makes shaving easier and comfortable. Its shaving technology features a fast-moving cutter (12000x per min) so it's efficient - even on longer hairs.

Trim it down



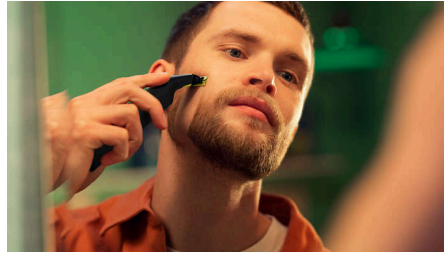
Trim your beard to an even length with the included adjustable precision comb. Dial up one of the 12 lock-in length settings to get everything from a 5 o'clock shadow, to a tight trim, to a longer beard style.

Edge it up



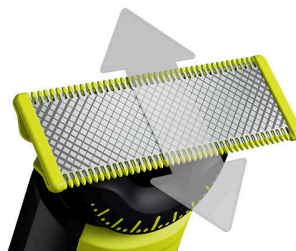
Create precise edges with the dual-sided blade. You can shave in either direction to get great visibility and see every hair that you're cutting. Line up your style in seconds!

Shave it off



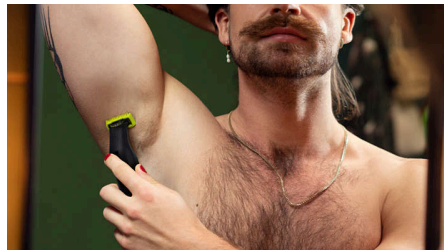
OneBlade does not shave as close as a traditional blade - so your skin stays comfortable. Go against the grain and shave off any length of hair easily.

Dual-sided blade



OneBlade follows the contours of your face, allowing you to easily and comfortably shave all areas. Use the dual-sided blade to style your edges and create clean lines by moving the blade in any direction.

Click-on skin guard



Attach the skin guard for an extra layer of protection on sensitive areas.

Click-on body comb



Attach the body comb (3 mm) for an easy trim in any direction.

USB-A charging



Can be charged at home or on the road, perfect for your daily routine and for travel.

Blade that doesn't fade easily



Stainless steel blade that lasts up to 4 months of use** to keep that fresh feel. An eject icon will appear on the blade when the blade is worn out.

Highlights

Wet & dry



OneBlade is fully waterproof (IPX7), so it is easy to clean: just rinse it under the tap. You can shave wet or dry, even in the shower - whichever you prefer. No shaving foam needed.

90 min Li-Ion battery



Rechargeable Li-Ion battery delivers 90 minutes of constant styling power after a 1 hour charge.

Battery indicator



Be sure that your OneBlade is always ready to go by checking the battery indicator. It alerts you while in-use when your battery is low, and indicates charging progress when plugged in.

Specifications

Trimming & shaving performance

Shaving system: Contour-following technology, Dual protection system

Trimming system: Contour-following technology

Accessories

Comb: 12-length comb (0.5 - 9 mm), Click-on skin guard, Click-on body comb

Maintenance: Protection cap

Extra replaceable blade

Power

Automatic voltage: 100-240 V

Run time: 90 minutes

Charging: 1 hour full charge

Battery type: Li-ion

Max power consumption: 5.4 W

Design

Handle: Ergonomic grip & handling

Color: Black

Service

2-year warranty

Replacement head: Replace every 4 months**, QP210, QP220, QP230, QP610, QP620, QP410, QP420, QP410, QP420, QP430

Ease of use

Display: 3 LED battery indicator

Charging: Rechargeable, USB-A Charging (5V[—] / ≥1A)

Wet & Dry

USB-A charging: Power Adapter not included

