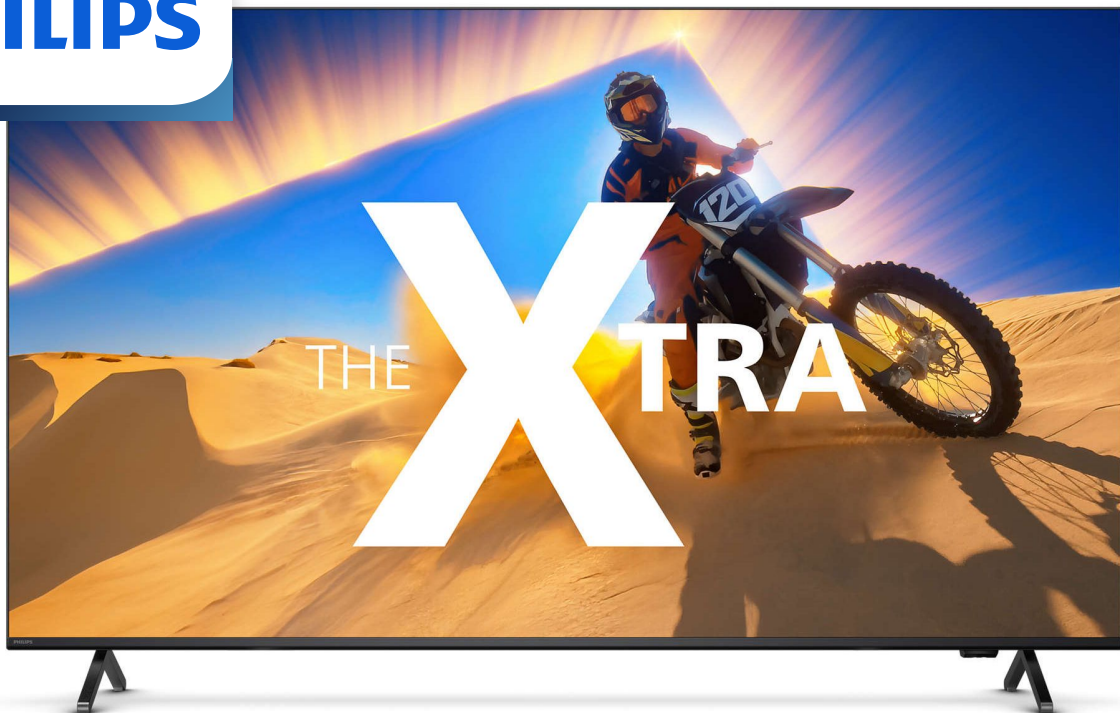


PHILIPS



4K QD MiniLED
AMBILIGHT tv

The Xtra

164cm(65") AMBILIGHT tv
P5 Perfect Picture Engine
Google TV™
Dolby Vision & Dolby Atmos



65PML9109

More color. More detail. More thrills.

The Xtra 4K QD MiniLED AMBILIGHT tv

Play with everything you've got. Watch from the edge of your seat. The Xtra gives you jaw-dropping detail and color, great sound and immersive Ambilight. Movies to sports to games, nights in have never been bigger.

The Xtra. 4K Mini-LED Ambilight TV.

- Immerse in what you love. Ambilight TV.
- Entertainment you love, with a little help from Google.
- Whatever the source, always perfection. Philips P5 engine.
- Quantum Dot technology for incredible color and contrast.

Epic, whatever you watch and play

- Philips Wireless Home System powered by DTS Play-Fi.
- Cinematic vision and sound. Dolby Vision and Dolby Atmos.
- Easy control - Control the TV with your voice.
- Supports all major HDR formats
- Epic gaming. 120 Hz, ultra-low lag, VRR, FreeSync.

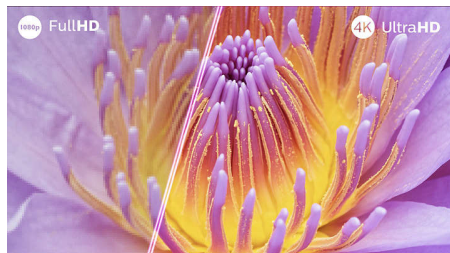
The Xtra

4K QD MiniLED AMBILIGHT tv

65PML9109/98

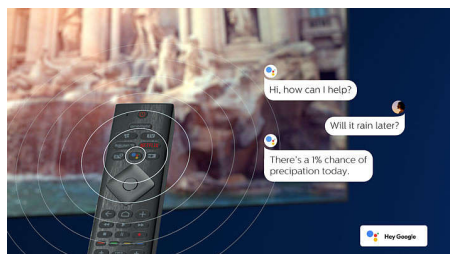
Highlights

Ambilight TV



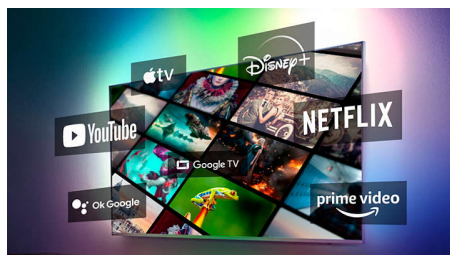
Ambilight TVs are the only TVs with integrated LED lights on the back that react to what you watch, immersing you in a halo of colorful light. It changes everything: your TV seems bigger, and you'll be drawn deeper into your favorite sports, movies, music, and games.

Voice control. Google Assistant. Works with Alexa



You get a choice of voice assistants! Push the Google Assistant button on your remote and you can use your voice to find movies and shows, get recommendations, control compatible smart home devices, and more. Or ask Alexa to control the TV via Alexa-enabled devices.

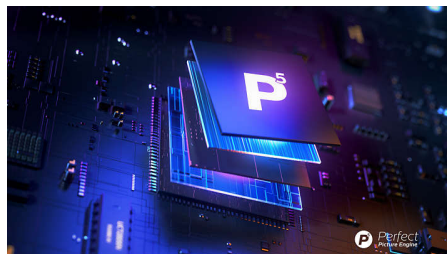
Google TV™



What do you want to watch? Google TV brings together movies, shows, and more, from across your apps and subscriptions-and organizes them just for you. You'll get suggestions based on

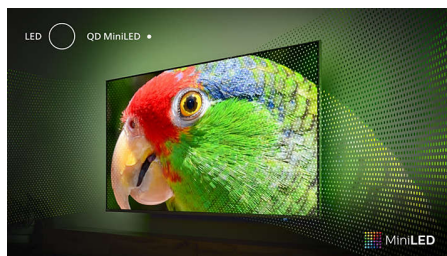
what you like, and you can even use the Google TV app on your phone to curate your watchlist on the go.

P5 Perfect Picture Engine



The Philips P5 engine delivers a picture as brilliant as the content you love. Details have noticeably more depth. Colors are vivid, while skin tones look natural. Contrast is so crisp you'll feel every detail. Motion is perfectly smooth.

Quantum Dot Mini-LED



Bolder colors. Crisper whites. Deeper blacks. The Xtras Quantum Dot Mini-LED technology gives you bright, detailed picture with pin-sharp contrast. You'll see more colors than ever before and this Ambilight TV is compatible with all major HDR formats, so you get more detail in dark and bright areas too.

Dolby Vision & Dolby Atmos



With Dolby Vision and Dolby Atmos on board, your films, shows, and games look and sound incredible. See the picture the director wanted

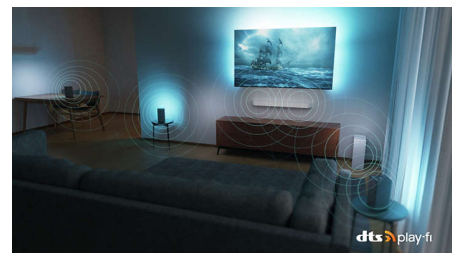
you to see no more disappointing scenes that are too dark to make out! Hear every word clearly. Experience sound effects like they're really happening around you.

Epic gaming



Play without limits and immerse in QD MiniLEDs incredible realism! HDMI 2.1, a blazing-fast 120 Hz native refresh rate, and ultra-low input lag bring fluid, responsive gameplay, super-smooth natural motion, and great-looking graphics. Ambilights gaming mode brings even bigger thrills and, if you're gaming on a PC, you can enjoy 144Hz VRR via HDMI.

DTS Play-Fi compatible



Philips Wireless Home System powered by DTS Play-Fi lets you connect to compatible soundbars and wireless speakers around your home in seconds. Listen to movies in the kitchen. Play music anywhere. You can even create a home-theater surround-sound system using your Ambilight TV as a central speaker.

Specifications

Ambilight

Ambilight Features: Wall colour adaptive, Lounge light mode, Ambilight Music, AmbiSleep, Sunrise Alarm, works with Philips Wireless Home Speakers

Ambilight Version: 3-sided

Picture/Display

Display: 4K UHD MiniLED
Panel resolution: 3840x2160
Native refresh rate: 120 Hz
Picture engine: P5 Perfect Picture Engine

Display input resolution

Resolution-Refresh rate: 576p-50Hz, 640x480-60Hz, 720p-50Hz,60Hz, 1920 x 1080p -24/25/30/50/ 60/100/120/144Hz, 2560 x 1440 - 60/120/144Hz, 3840x2160p - 24/25/30/50/60/100/120/144Hz

Tuner/Reception/Transmission

Digital TV: DVB-T/T2
TV Program guide*: 8 day Electronic Program Guide
Teletext: 1000 page Hypertext

Smart TV

OS: Google TV™
Memory size (Flash)*: 64GB
Smart TV app*: Netflix, HBO, YouTube, Amazon Prime Video, STB Controller App

Smart TV Features

User Interaction: Screen mirroring
Voice assistant*: Google Assistant built-in, RC with Mic.
Smart Home experience: Works with Amazon Alexa, Works with Google assistant

Multimedia Applications

Video Playback Formats: AVI, MKV, HEVC, H.264/MPEG-4 AVC, MPEG1, MPEG2, MPEG4, VP9, HEVC (H.265), AV1
Music Playback Formats: MP3, WAV, AAC, FLAC
Subtitles Formats Support: SRT, SMI, SSA, SUB, ASS, TXT
Picture Playback Formats: JPEG, GIF, PNG, BMP, HEIF
Sound
Output power (RMS): 40W
Speaker configuration: 4x10W full range speakers
Codec: Dolby Digital MS12 V2.6.2, Dolby Atmos, DTS:X
Sound Enhancement: Dolby Bass Enhancement, Clear Dialogue, A.I. Sound, A.I. EQ, Dolby Volume Leveler, Night mode, Sound Personalization

Connectivity

Number of HDMI connections: 4
HDMI features: 4K, Audio Return Channel
EasyLink (HDMI-CEC): Remote control pass-through, System audio control, System standby, One touch play
Number of USBs: 2
Wireless connection: Wi-Fi 802.11ac, 2x2, Dual band, Bluetooth 5.0
HDCP 2.3: Yes on all HDMI
HDMI ARC: Yes on HDMI2
HDMI 2.1 features: eARC on HDMI 2, eARC/VRR/ ALLM supported
EasyLink 2.0: External setting via TV UI, HDMI-CEC for Philips TV/SB

Supported HDMI video features

HDMI 1/2: HDMI 2.1 full bandwidth 48Gbps, upto 4K 120Hz
Gaming: ALLM, HDMI VRR, AMD FreeSync Premium
HDMI 3/4: HDMI 2.0
HDR: Dolby Vision, HDR10, HDR10+ Compatible, HLG

Power

Standby power consumption: <0.5W
Power Saving Features: Auto switch-off timer, Picture mute (for radio), Eco mode, Light sensor

Accessories

Included accessories: Remote Control, 2 x AAA Batteries, Table top stand, Power cord, Quick start guide, Legal and safety brochure

Dimensions

Product weight: 23 kg
Product weight (+stand): 23.5 kg
Weight incl. Packaging: 28.5 kg
Wall mount compatible: 300 x 300 mm
TV without stand (W x H x D): 1451 x 844 x 85 mm
TV with stand (W x H x D): 1451 x 905 x 316 mm
Package carton (W x H x D): 1600 x 995 x 170 mm

* Android App offerings vary per country. For more details please visit your local Google Play Store.
* Image depicted on the website are non-contractual pictures. Please always refer to the actual TV that are sold in the retail or stores.
* Smart TV app availability varies per TV model and country. For more details please visit: www.philips.com/smarttv.
* Philips TV Remote app and related functionalities vary per TV model, operator and country, as well as smart device model and OS. For more details please visit: www.philips.com/TVRemoteapp.
* EPG and actual visibility (up to 8 days) is country- and operator-dependent.
* Netflix subscription required. Subject to terms on <https://www.netflix.com>
* Amazon Prime is available in selected languages and countries.
* Amazon, Alexa and all related logos are trademarks of Amazon.com, Inc. or its affiliates. Amazon Alexa is available in selected languages and countries.
* Disney+ subscription required. Subject to terms at <https://www.disneyplus.com> (c) 2020 Disney and its related entities. Disney+ is available in selected languages and countries.
* Google Assistant is available in different languages and countries specific to product types.
* Availability and functionality of voice control services varies according to country and language.
* Memory size (Flash) : 64GB, the actual available disc space may differ (dependent on e.g. (pre-)installed apps, installed operating system, etc.)
* Google TV is the name of this device's software experience and a trademark of Google LLC.
* Google TV is the name of this device's software experience and a trademark of Google LLC. YouTube,Ok Google and other marks are trademarks of Google LLC.
* Images are for illustrative purpose
* Image depicted on the website are non-contractual pictures. Please always refer to the actual TV that are sold in the retail or stores.

Connections

Side



Down

