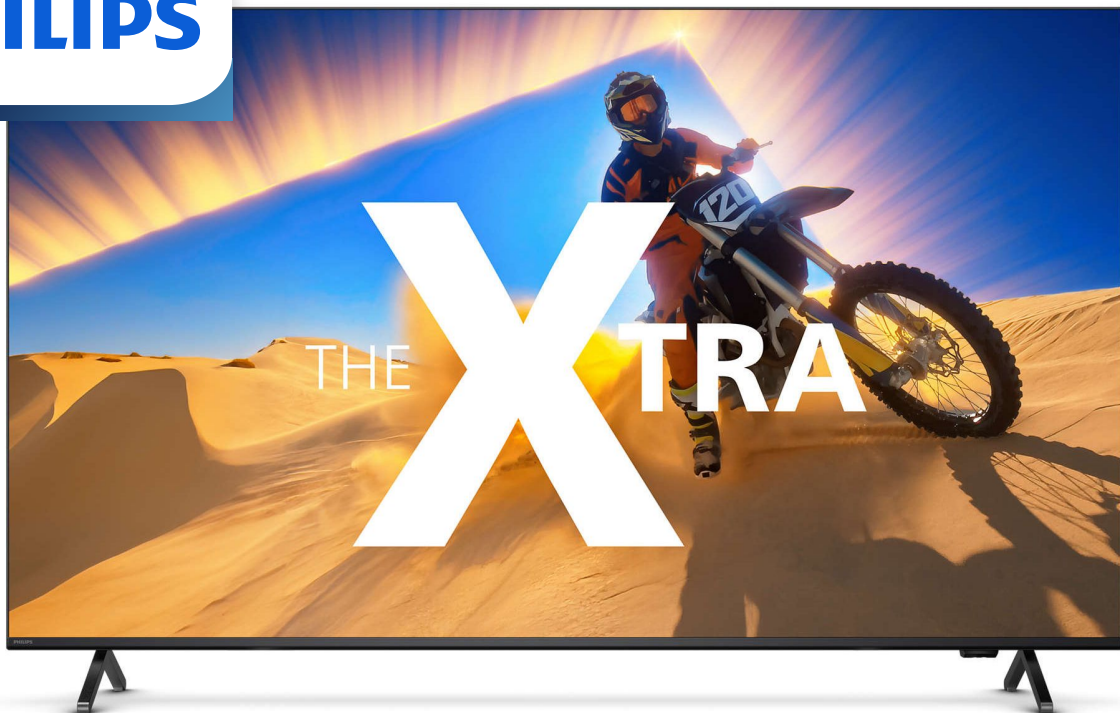


# PHILIPS



4K QD MiniLED  
AMBILIGHT tv

The Xtra

139cm(55") AMBILIGHT tv  
P5 Perfect Picture Engine  
Google TV™  
Dolby Vision & Dolby Atmos



55PML9109

## More color. More detail. More thrills.

### The Xtra 4K QD MiniLED AMBILIGHT tv

Play with everything you've got. Watch from the edge of your seat. The Xtra gives you jaw-dropping detail and color, great sound and immersive Ambilight. Movies to sports to games, nights in have never been bigger.

#### **The Xtra. 4K Mini-LED Ambilight TV.**

- Immerse in what you love. Ambilight TV.
- Entertainment you love, with a little help from Google.
- Whatever the source, always perfection. Philips P5 engine.
- Quantum Dot technology for incredible color and contrast.

#### **Epic, whatever you watch and play**

- Philips Wireless Home System powered by DTS Play-Fi.
- Cinematic vision and sound. Dolby Vision and Dolby Atmos.
- Easy control - Control the TV with your voice.
- Supports all major HDR formats
- Epic gaming. 120 Hz, ultra-low lag, VRR, FreeSync.

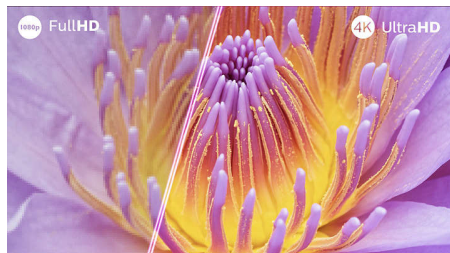
# The Xtra

4K QD MiniLED AMBILIGHT tv

55PML9109/98

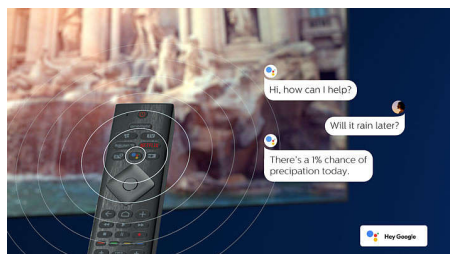
## Highlights

### Ambilight TV



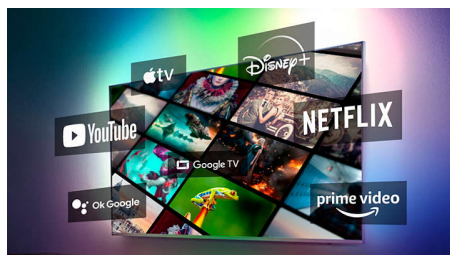
Ambilight TVs are the only TVs with integrated LED lights on the back that react to what you watch, immersing you in a halo of colorful light. It changes everything: your TV seems bigger, and you'll be drawn deeper into your favorite sports, movies, music, and games.

### Voice control. Google Assistant. Works with Alexa



You get a choice of voice assistants! Push the Google Assistant button on your remote and you can use your voice to find movies and shows, get recommendations, control compatible smart home devices, and more. Or ask Alexa to control the TV via Alexa-enabled devices.

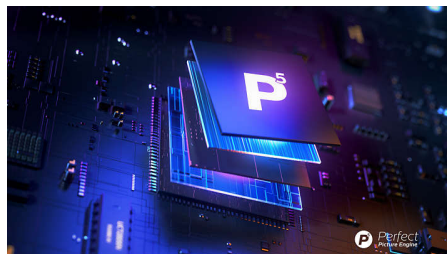
### Google TV™



What do you want to watch? Google TV brings together movies, shows, and more, from across your apps and subscriptions-and organises them just for you. You'll get suggestions based on

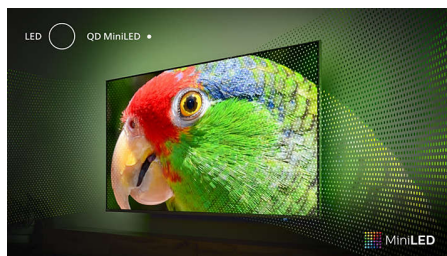
what you like, and you can even use the Google TV app on your phone to curate your watchlist on the go.

### P5 Perfect Picture Engine



The Philips P5 engine delivers a picture as brilliant as the content you love. Details have noticeably more depth. Colors are vivid, while skin tones look natural. Contrast is so crisp you'll feel every detail. Motion is perfectly smooth.

### Quantum Dot Mini-LED



Bolder colors. Crisper whites. Deeper blacks. The Xtras Quantum Dot Mini-LED technology gives you bright, detailed picture with pin-sharp contrast. You'll see more colors than ever before and this Ambilight TV is compatible with all major HDR formats, so you get more detail in dark and bright areas too.

### Dolby Vision & Dolby Atmos



With Dolby Vision and Dolby Atmos on board, your films, shows, and games look and sound incredible. See the picture the director wanted

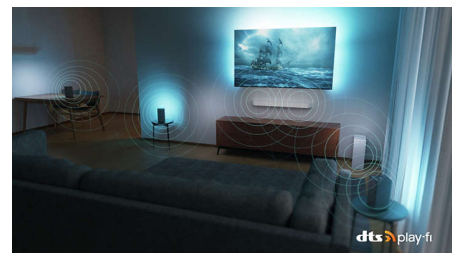
you to see no more disappointing scenes that are too dark to make out! Hear every word clearly. Experience sound effects like they're really happening around you.

### Epic gaming



Play without limits and immerse in QD MiniLEDs incredible realism! HDMI 2.1, a blazing-fast 120 Hz native refresh rate, and ultra-low input lag bring fluid, responsive gameplay, super-smooth natural motion, and great-looking graphics. Ambilights gaming mode brings even bigger thrills and, if you're gaming on a PC, you can enjoy 144Hz VRR via HDMI.

### DTS Play-Fi compatible



Philips Wireless Home System powered by DTS Play-Fi lets you connect to compatible soundbars and wireless speakers around your home in seconds. Listen to movies in the kitchen. Play music anywhere. You can even create a home-theater surround-sound system using your Ambilight TV as a central speaker.

AMBILIGHT tv

Hey Google

Google TV

Perfect Picture Engine

MiniLED

Dolby Vision Atmos

AMD FreeSync Premium

DTS Play-Fi

## Specifications

### Ambilight

**Ambilight Features:** Wall colour adaptive, Lounge light mode, Ambilight Music, AmbiSleep, Sunrise Alarm, works with Philips Wireless Home Speakers, Ambilight FTI Animation

**Ambilight Version:** 3-sided

### Picture/Display

**Display:** 4K UHD MiniLED

**Panel resolution:** 3840x2160

**Native refresh rate:** 120 Hz

**Picture engine:** P5 Perfect Picture Engine

### Display input resolution

**Resolution-Refresh rate:** 576p-50Hz, 640x480-60Hz, 720p-50Hz,60Hz, 1920 x 1080p -24/25/30/50/ 60/100/120/144Hz, 2560 x 1440 - 60/120/144Hz, 3840x2160p - 24/25/30/50/60/100/120/144Hz

### Tuner/Reception/Transmission

**Digital TV:** DVB-T/T2

**TV Program guide\*:** 8 day Electronic Program Guide

**Teletext:** 1000 page Hypertext

### Smart TV

**OS:** Google TV™

**Memory size (Flash)\*:** 64GB

**Smart TV app\*:** Netflix, HBO, YouTube, Amazon Prime Video, STB Controller App

### Smart TV Features

**User Interaction:** Screen mirroring

**Voice assistant\*:** Google Assistant built-in, RC with Mic.

**Smart Home experience:** Works with Amazon Alexa, Works with Google assistant

### Multimedia Applications

**Video Playback Formats:** AVI, MKV, HEVC, H.264/MPEG-4 AVC, MPEG1, MPEG2, MPEG4, VP9, HEVC (H.265), AV1

**Music Playback Formats:** MP3, WAV, AAC, FLAC

**Subtitles Formats Support:** SRT, SMI, SSA, SUB, ASS, TXT

**Picture Playback Formats:** JPEG, GIF, PNG, BMP, HEIF

### Sound

**Output power (RMS):** 40W

**Speaker configuration:** 4x10W full range speakers

**Codec:** Dolby Digital MS12 V2.6.2, Dolby Atmos, DTS:X

**Sound Enhancement:** Dolby Bass Enhancement, Clear Dialogue, A.I. Sound, A.I. EQ, Dolby Volume Leveler, Night mode, Sound Personalization

### Connectivity

**Number of HDMI connections:** 4

**HDMI features:** 4K, Audio Return Channel

**EasyLink (HDMI-CEC):** Remote control pass-through, System audio control, System standby, One touch play

**Number of USBs:** 2

**Wireless connection:** Wi-Fi 802.11ac, 2x2, Dual band, Bluetooth 5.0

**HDCP 2.3:** Yes on all HDMI

**HDMI ARC:** Yes on HDMI2

**HDMI 2.1 features:** eARC on HDMI 2, eARC/VRR/ ALLM supported

**EasyLink 2.0:** External setting via TV UI, HDMI-CEC for Philips TV/SB

# Specifications

### Supported HDMI video features

**HDMI 1/2:** HDMI 2.1 full bandwidth 48Gbps, upto 4K 120Hz

**Gaming:** ALLM, HDMI VRR, AMD FreeSync Premium

**HDMI 3/4:** HDMI 2.0

**HDR:** Dolby Vision, HDR10, HDR10+ Compatible, HLG

### Power

**Standby power consumption:** <0.5W

**Power Saving Features:** Auto switch-off timer, Picture mute (for radio), Eco mode, Light sensor

### Accessories

**Included accessories:** Remote Control, 2 x AAA Batteries, Table top stand, Power cord, Quick start guide, Legal and safety brochure

### Dimensions

**Product weight:** 15.5 kg

**Product weight (+stand):** 16 kg

**Weight incl. Packaging:** 20 kg

**Wall mount compatible:** 300 x 300 mm

**TV without stand (W x H x D):** 1231 x 779 x 82 mm

**TV with stand (W x H x D):** 1231 x 779.5 x 270 mm

**Package carton (W x H x D):** 1360 x 840 x 160 mm

## Connections

### Side

5.0V---900mA



USB 2



HDMI 4



HDMI 4

### Down



DIGITAL AUDIO OUT



TV ANTENNA



HDMI 1 4K 120Hz



HDMI 2 ARC/eARC 4K 120Hz

5.0V---500mA



USB 1



NETWORK



HDMI 3



\* Android App offerings vary per country. For more details please visit your local Google Play Store.

\* Image depicted on the website are non-contractual pictures. Please always refer to the actual TV that are sold in the retail or stores.

\* Smart TV app availability varies per TV model and country. For more details please visit: [www.philips.com/smarttv](http://www.philips.com/smarttv).

\* Philips TV Remote app and related functionalities vary per TV model, operator and country, as well as smart device model and OS. For more details please visit: [www.philips.com/TVRemoteapp](http://www.philips.com/TVRemoteapp).

\* EPG and actual visibility (up to 8 days) is country- and operator-dependent.

\* Netflix subscription required. Subject to terms on <https://www.netflix.com>

\* Amazon Prime is available in selected languages and countries.

\* Amazon, Alexa and all related logos are trademarks of Amazon.com, Inc. or its affiliates. Amazon Alexa is available in selected languages and countries.

\* Disney+ subscription required. Subject to terms at <https://www.disneyplus.com> (c) 2020 Disney and its related entities. Disney+ is available in selected languages and countries.

\* Google Assistant is available in different languages and countries specific to product types.

\* Availability and functionality of voice control services varies according to country and language.

\* Memory size (Flash) : 64GB, the actual available disc space may differ (dependent on e.g. (pre-)installed apps, installed operating system, etc.)

\* Google TV is the name of this device's software experience and a trademark of Google LLC.

\* Google TV is the name of this device's software experience and a trademark of Google LLC. YouTube, Ok Google and other marks are trademarks of Google LLC.

\* Images are for illustrative purpose

\* Image depicted on the website are non-contractual pictures. Please always refer to the actual TV that are sold in the retail or stores.