



KitchenAid Go Cordless System

Cordless Food Choppers

5KFCR500BM* - 5KFCR531BM



- **Two speeds settings**

To chop, mix or purée to perfection
To control how fast or slow the chopper can work, for coarse or fine chopping

- **Multipurpose stainless steel blades**

Mix, chop, and purée with ease

- **Whisk accessory**

To whisk, whip or stir, or even make whipped cream

- **Drizzle basin**

Trickle in the right amount of oil or other liquids whilst in use
To easily create tasty dressings and sauces

- **Compact KitchenAid Go cordless system food chopper design with convenient in-bowl accessory storage****

The power to make, the power to move
For tackling any recipe, anywhere
Compact and easy storage
In- and outdoor usage

- **Rechargeable 12V Lithium Ion battery***

Delivers optimal runtime and performance
Provides up to 25 minutes of continuous runtime***
Eliminates the constraints of a cord
Powers all KitchenAid Go cordless system appliances for cord-free, powerful making
Versatile ecosystem

- **1.18 L capacity BPA-free work bowl with pour spout and handle**

Easy to clean and use

- **Complete the KitchenAid Go cordless collection**** including Hand Blenders, Hand Mixer, Food Chopper, Personal Blender, Coffee Grinder and Kitchen Hand Vacuum**

The freedom to make wherever, whatever, and however
One removable battery powers all appliances for easy swapping and maximum versatility, for meal making made easy, for endless possibilities, for maximum versatility



MATTE BLACK

* Battery not included in the model 5KFCR500BM. Battery sold separately.

** Charger not stored in bowl.

*** Maximum initial battery voltage (measured without a workload) is 12 volts. Nominal voltage is 10.8. Actual run time will vary based on recipe and/or attachments used. Battery life impacted by factors such as battery age and use.

**** Each sold separately.

KitchenAid Go Cordless System

Cordless Food Choppers 5KFCR500BM - 5KFCR531BM

TECHNICAL DATA

Motor		DC (Direct current)
Voltage		12 V
Number of speeds		2 speeds (1 & 2) - A quick pulse is one second ON and one second OFF operation
Blades speed (min - max)		2380 - 4025 RPM
Material of motor body		Plastic
Product dimensions	H x W x D	26.55 x 14.5 x 18.39 cm
Packaging dimensions	5KFCR500BM H x W x D	30.2 x 19.2 x 19.4 cm
	5KFCR531BM H x W x D	30.2 x 19.9 x 20 cm
Master pack dimensions	5KFCR500BM H x W x D	31 x 20.2 x 39.4 cm
	5KFCR531BM H x W x D	31 x 20.7 x 41 cm
Net weight	5KFCR500BM	1.205 kg
	5KFCR531BM	1.46 kg
Gross weight	5KFCR500BM	1.92 kg
	5KFCR531BM	2.27 kg
Master pack gross weight	5KFCR500BM	4.02 kg
	5KFCR531BM	4.66 kg
Master pack		2 units
Country of origin		China (Designed in the USA)
Twist-free, one-click bowl assembly and latched lid		Yes
Capacity work bowl		1.18 L
Pour spout		Yes
Handle		Yes
In-bowl storage		Yes
Anti-slip feet		Yes
Multipurpose blade		Yes
Recommended volume for the multipurpose blade		300 g raw meat - 113 g cheese - 720 g (3 cups) vegetable
Whisking accessory		Yes
Drizzle bassin		Yes

One interchangeable battery included in model 5KFCR531BM*/**

Rechargeable Lithium Ion battery	Battery cell type: LR1865LA
Full charge time battery	3 hours
Battery indicator light (LED)	Yes
Power cord type USB-C	Yes
Power adapter	Yes
Charging cord (black) length	91.44 cm
Running time with full battery	25 minutes***
Input USB adapter	100-240 V~, 50-60 Hz, 0.5 A
USB output	5 VDC, 2 A
Nominal voltage external battery	10.8 VDC
Maximum voltage external battery	12 VDC
Average battery lifespan	7 years based on 400 charge cycles

REFERENCES	COLOURS	EAN	EAN MASTER PACK (2 UNITS)
5KFCR500BM	MATTE BLACK	5413184123000	5413184002992
5KFCR531BM	MATTE BLACK	5413184124007	5413184123925

* Also available as an optional accessory.

** Not included in the model 5KFCR500BM. Battery model 5KRB12 can be purchased as an optional accessory.

*** Maximum initial battery voltage (measured without a workload) is 12 volts. Nominal voltage is 10.8. Actual running time will vary based on recipe and/or attachments used. Battery life impacted by factors such as battery age and use.

KitchenAid Go Cordless System

Cordless Food Choppers 5KFCR500BM - 5KFCR531BM

STANDARD ACCESSORIES



1.18 L BPA-free work bowl with pour spout, handle and drizzle basin

Features a locking blade, handle and pour spout for easy serving.



The drizzle basin allows to add liquid ingredients such as oil during processing.

Master tasty dressings and sauces such as mayonnaise.

Dishwasher-safe.



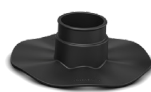
Multipurpose stainless steel blades

To chop raw fruits and vegetables or nuts, and mince parsley, chives, or garlic for easy preparation.

Purée cooked fruit or vegetables to make baby food, or to use as bases for soups and sauces.

Easily make bread crumbs or grind raw meat.

Dishwasher-safe.



Whisk accessory

Can be used to incorporate air into foods such as eggs, egg whites, heavy cream, mayonnaise, etc. Dishwasher-safe.



Rechargeable 12V Lithium Ion battery and USB-C cable**/**/** 5KRB12

Easy to charge. Lithium-Ion batteries charge faster, last longer, and have a higher power density for more battery life in a lighter package.

Full Charge: The battery will be fully charged in around 3 hours and when all LEDs are solid.

Does not include a USB adapter.



OPTIONAL ACCESSORIES



Charging dock with fixed cable 5KRBC12

The charging dock has a 91.44 cm length cable. Includes a USB-A to USB-C charging cable.

The KitchenAid Go charging dock is designed for the home to provide a clutter-free space to charge the battery and allows to easily swap in a new battery**** if it runs out.

It plugs into a USB port for convenient charging.

TECHNICAL DATA OPTIONAL ACCESSORIES

		5KRB12	5KRBC12
		Removable 12V battery	Docking station
Product dimensions	H x W x D	2.8 x 7 x 7.9 cm	2.475 x 7 x 7.9 cm
Packaging dimensions	H x W x D	10.2 x 6.1 x 10.1 cm	13.6 x 5.5 x 11.7 cm
Master pack dimensions	H x W x D	21.3 x 20.3 x 21.5 cm	14.4 x 23.4 x 36.4 cm
Net weight		0.24 kg	0.08 kg
Gross weight		0.4 kg	0.16 kg
Master pack gross weight		4.94 kg	2.26 kg
Master pack		12 units	12 units

REFERENCES	DESCRIPTION	EAN	EAN MASTER PACK (2 UNITS)
5KRB12	REMOVABLE 12V BATTERY	5413184002947	5413184903053
5KRBC12	DOCKING STATION	5413184002954	5413184903060

* Also available as an optional accessory.

** Not included in the model 5KFCR500BM. Battery model 5KRB12 can be purchased as an optional accessory.

*** Maximum initial battery voltage (measured without a workload) is 12 volts. Nominal voltage is 10.8. Actual run time will vary based on recipe and/or attachments used. Battery life impacted by factors such as battery age and use.

**** Extra battery sold separately.