



Philips 1000 Series Garment steamer

STE1020/46

- 1.8L detachable water tank
- Integrated hanger on top
- 3 steam settings
- 36 g/min continuous steam
- Up to 99.9% of bacteria* removed

Easy dewrinkling on all kinds of fabrics

Long-lasting steam with 1.8L water tank

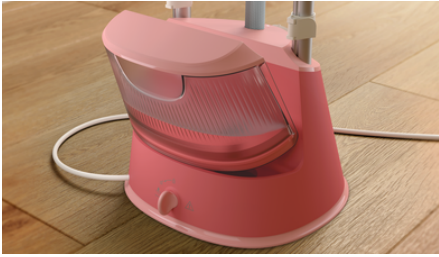
- Large and detachable water tank
- Continuous steam up to 36g/min
- Multiple steam settings for better results
- 45 seconds heat up time, to be ready in no time
- Safe on all ironable fabrics
- Kills 99.9% of bacteria and dust mites* to refresh garments
- Compact design for easy storage
- Adjustable double poles for various height settings
- Integrated accessories for improved performance

1.8L detachable water tank, Integrated hanger on top, 3 steam settings, 36 g/min continuous steam, Up to 99.9% of bacteria* removed

STE1020/46

Highlights

Water tank



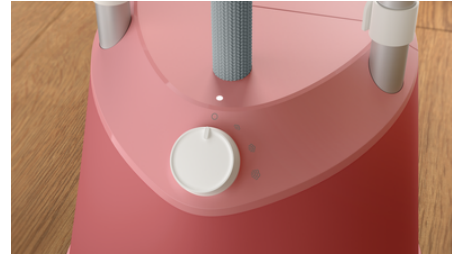
The large 1.8L water tank can be detached for easy refill to ensure long steaming sessions with no interruptions.

Continuous steam up to 36g/min



The steam engine produces 36g/min of powerful continuous steam to enable de-wrinkling with only a few strokes

Steam settings



Set your preferred steam setting for optimal results on different fabric. Use low steam for thinner fabrics and a more powerful setting for thicker fabrics and coats.

Fast heat-up



Whenever you need it, the steamer is ready in 45 seconds to help you with last minute touch-ups.

Safe on all ironable fabrics



The steamer is safe to use on all ironable fabrics and garments. The steam plate can be safely pressed against any clothing with no risk of burning; a great solution for delicate fabrics like silk.

99.9% bacteria* removal



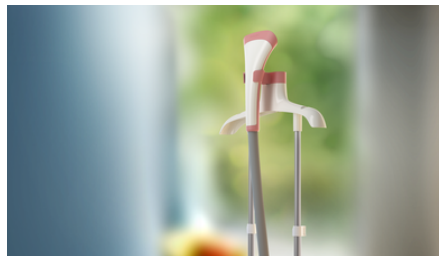
Prolonged hot steam kills 99.9% of bacteria and dust mites* and removes odors to keep garments fresh.

Compact design



Thanks to the compact design of the base and the collapsible double poles, the steamer can be easily stored after use

Adjustable pole(s)



The double poles can be adjusted to the desired height to hang your garments and steam them comfortably.

Accessories



Extra accessories are included with the steamer to enhance your steaming experience: a heat-proof glove for extra protection, a fabric brush for deeper steam penetration and a hanger on top for better convenience.

Specifications

Easy to use

Heat up time: 45 s
Safe on all ironable fabrics: Even delicates like silk
Power cord length: 1.5 m
Hose length: 1.33 m
Iron dock: Yes, frontal, on top
Automatic shut-off: No

Design

Color: Soft red

Size and weight

Packaging dimensions (WxHxL): 35 x 34.7 x 42.7 cm
Total weight with packaging: 4.80 kg
Weight of steamer head: 270 g
Dimensions of the steampate: 55.67 cm²
Total weight of the product: 2.95 kg
Product dimensions (W x H x L) stowed away: 30.3 x 117.9 x 43.4
Product dimensions (W x H x L) fully extended: 30.3 x 168.2 x 43.4

Technical specifications

Voltage: 220-240 V
Material steam plate: Plastic
Pole(s): Double poles
Integrated wheels: No
Power: 1800 W
Country of production: China
Steam rate: 36 g/min
Steam boost: No
Steam settings: 3
Steam trigger: No
Water tank: 1.8L, detachable
Accessories: Hanger, Glove, Brush

Calc management

Limescale management: Easy Rinse

Guarantee

General warranty: 2 years

