

PHILIPS

7000 Series

Hair Dryer

ThermoShield Advanced

30% Faster drying*

25% more consistent heat

Water ion, mineral ion, 8 x ion



BHD720/13



30% Faster*. Lighter**. Ultimate hair protection. With ThermoShield Advanced Technology

The Philips 7000 Series Hair Dryer delivers professional results, fast. Millions of ions intensify your hair's shine, while ThermoShield Advanced Technology senses the temperature to protect hair from overheating.

Easy to use

- Volume diffuser with magnetic nozzle
- Magnetic styling nozzle attaches effortlessly

Ease of use

- Adjustable heat and fan speed for any hair and style
- Now 20% lighter** for comfortable styling

Care for your hair

- Water ions bring moisture to your hair
- Ionic care system with 8 x***** more ions
- Mineral ions protect against UV rays*****
- Intelligent Hot and Cold Mode for year-round comfort

Fast drying experience

- Performs better than a 2300 W dryer*****

Sustainability

Highlights

ThermoShield Advanced



Dual-sensor system continuously reads the temperature in your room and actively adjusts the drying temperature 24,000 times*** per session to protect your hair from overheating. Enjoy a 25% more consistent**** drying temperature in any environment.

Powerful airflow



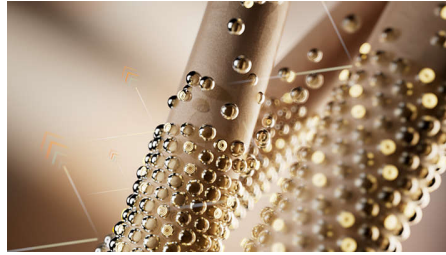
Innovative fan blades and a specially designed heater work their magic for dry hair in just 4 minutes*****.

Water ion



Add moisture for soft, healthy-looking hair. Water ion technology generates over 1000 times more water content than without an ioniser.

Mineral ions



Keep your hair smooth and versatile. Mineral ion technology protects your hair against surface damage that can be caused by UV rays*****.

Ionic care system



Ions intensify your hair's shine for frizz-free, glossy styling. Our powerful ionic system generates up to 80 million ions each drying session.

Now 20% lighter**



The ergonomic design of the hair dryer is now 20% lighter** so you can be stylish and comfortable at the same time.

Intelligent Hot and Cold Mode



Keep comfortable throughout the year. Intelligent Hot and Cold Mode automatically sets the best drying temperature for the season*****. Blow drying with hot/cold mode can also preserve your hair's natural shine.

8 heat and speed settings



Take control of your style with 4 heat settings and 2 fan speeds on the intuitive LED panel. Use the Cool Shot button for an intense burst to set your style, a must-have professional function for expert hair styling.

22% less energy used*****



The hair dryer uses 22% less energy while delivering professional drying and styling results*****.

Specifications

Attachments

Nozzle: 11 m
Magnetic diffuser

Technical specifications

Wattage: 1800 W
Voltage: 220-240 V
Motor: DC
Cable length: 1.8 m

Features

Storage hook
Heat/Speed settings: 8

Service

2 year worldwide warranty

Caring technologies

Ion technology: 8 x ions, Water ion, Mineral ion

