

# PHILIPS

IPL Hair removal device with SenseIQ

Lumea IPL Prestige

SmartSkin Sensor

1 intelligent attachment: body

Lumea IPL App

Corded use

BRI940/00



## Tailored to you with SenseIQ

Enjoy 6 months of silky smooth skin\*

Enjoy a quick and personalized treatment with our Lumea IPL Prestige. SenseIQ technology with smart attachments and Lumea IPL app for long-lasting smooth skin.

### Gentle and effective for long-lasting smooth skin

- Developed with dermatologists to be easy and effective
- Treat only 2x a month for fast results
- Extra-long cable for added flexibility while treating

### Full solution for face and body

- Solution for body with 1 smart attachment
- Suitable for most skin tones and hair colors

### Personalized IPL hair removal treatment

- Optimize your routine with the Philips Lumea IPL app
- Gentle and comfortable with SenseIQ

# Highlights

## 1 smart attachment



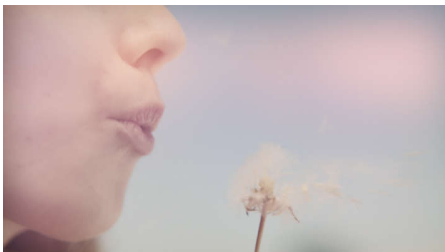
The specially designed attachment is curved inward for optimal skin contact when treating large areas like legs. A tailored program is triggered when it is connected.

## Philips Lumea IPL app



Our free coaching app helps you plan and stick to your treatment schedule, then takes you through each session step by step. Downloaded by more than 2.1 million users.

## Developed with dermatologists



As a leader in health technology, Philips developed Lumea IPL in consultation with dermatologists, for easy and effective use in

the safety of your home. Derived from technology used in professional salons, Lumea IPL offers gentle treatment, even on sensitive areas.

## 2x a month for fast results



Every 2 weeks to get started — that's half as many treatments as other brands. Followed by touch-ups just once a month. That's it. Covering both lower legs takes 8.5 minutes.

## SenseIQ technology



Lumea Prestige has five easily adjustable light settings. Our SmartSkin sensor reads your skin tone and helps you find the most comfortable setting. Intelligent attachments adapt treatment for each body area.

## Extra-long cable



Convenient to use thanks to an extra long cable for easy access and enhanced maneuverability.

## For most skin and hair types



IPL needs contrast between the pigment in the hair color and the pigment in the skin tone, therefore works on naturally dark blonde, brown and black hair and on skin tones from fair to dark brown (I-V).

# Specifications

## Technical specs. attachments

**Body treatment attachment:** Shape: Convex curved, Window size: 4.1 cm<sup>2</sup>, Tailored treatment for body: legs, arms and stomach

## Service

**Warranty:** 2 years global warranty + 1 extra year of warranty upon product registration within 90 days

## Technical specifications

**High performance lamp:** Built to last, 450,000 flashes, equivalent to 39 years of lamp lifetime\*\*

## Items included

**Instructions for use:** User manual  
**Storage:** Beauty pouch  
**Adapter:** 19.5V / 4000mA

## Safety and adjustable settings

**Integrated UV filter:** Protects skin from UV light  
**5 light energy settings:** Adjustable to your skin type  
**Integrated safety system:** Prevent unintentional flashing  
**Skin Tone sensor:** Detects your skin tone  
**SmartSkin sensor:** The right setting on demand

## Application time

**Underarms:** 2,5 min  
**Bikini line:** 2 min  
**Lower legs:** 8,5 min

## Application mode

**Slide and Flash:** For quick application  
**Corded / cordless use:** Corded use  
**Stamp and Flash:** For treatment on small areas

## Technical specifications

**Voltage:** 100-240 V

