

PHILIPS

Heated
straightening brush

5000

Extra large brush area

ThermoProtect technology

Keratin Ceramic coating



BHH730



Naturally straight hair in 5 minutes*

Smooth, shiny, frizz-free hair

Reveal naturally straight, beautifully shiny hair in just 5 minutes. Our ThermoProtect technology and bristle design work together for healthy looking, frizz-free hair.

Ease of use

- Large paddle-shaped brush
- Swivel cord

Care and protect

- Triple bristle design
- ThermoProtect minimizes heat damage on hair
- 200°C temperature for effective styling
- Keratin infused ceramic coating

Highlights

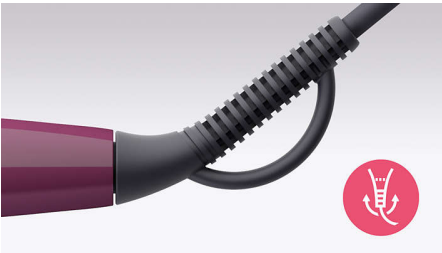
Specifications

Paddle-shaped brush



The paddle-shaped design to straighten more hair in one go.

Swivel cord



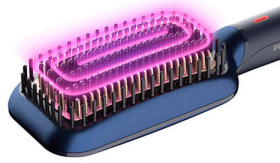
Swivel cord for comfortable use.

Triple bristle design



Triple bristle design gently detangles and straightens while protecting your scalp from heat.

ThermoProtect technology



Temperature of the bristles stays at an optimized level to minimize the heat damage, while reducing friction. Leaving hair naturally straight with a silky smooth look.

200°C styling temperature



Convenient one push for styling temperature

Keratin ceramic coating

The bristles with keratin infused ceramic coating glide smoothly through your hair for naturally straight and shiny look.

Technical specifications

Voltage: Universal V
Cord length: 1.8 m
Heater type: PTC
Product size (mm): 350 L x 75 W x 48 D
Total number of bristles: 247
LED light indicator: White color

Features

Temperature Settings: 200°C
Brush shape: Paddle
Brushing area (mm): 116 L x 60 W
Number of heated bristles: 111

Ease of use

Storage hook
Swivel cord

Service

2-year warranty

Caring technologies

ThermoProtect
Keratin infused coating

