



Philips StraightCare
Vivid Ends straightener

with SplitStop technology
for split ends prevention
Ionic conditioning
Keratin infusion



BHS675

Put your hair in the spotlight

Up to 95% split-free ends*

Vivid ends straightener is our first straightener designed to protect your fragile ends. Thanks to our premier SplitStop Technology you can enjoy beautifully styled hair with healthy looking ends!

Beautifully styled hair

- Keratin infusion for better care
- More care with ionic conditioning for shiny, frizz-free hair

Proven to prevent split ends

- SplitStop Technology for ultimate split ends prevention
- UniTemp sensor for beautifully styled hair with less heat
- Ceramic coating for smooth gliding and damage prevention
- 11 digital temperature settings for absolute control

Ease of use

- Extra Long plates (105mm) for fast and easy straightening
- Cool Tip to easily create curls and waves
- Fast heat up time, ready to use in 30 sec
- 1.8 m power cord
- Auto shut-off for safe usage

PHILIPS

Vivid Ends straightener
with SplitStop technology for split ends prevention, Ionic conditioning, Keratin infusion

BHS675/03

Highlights

SplitStop Technology



Our secret to ultimate split ends prevention is the new SplitStop Technology. It is a unique combination of UniTemp sensor and our smooth ceramic plates to respect the health of your hair. The UniTemp sensor protects your hair from being exposed to unnecessary high heat and our styling plates guarantee minimal friction for ultimate split ends protection.

UniTemp Sensor

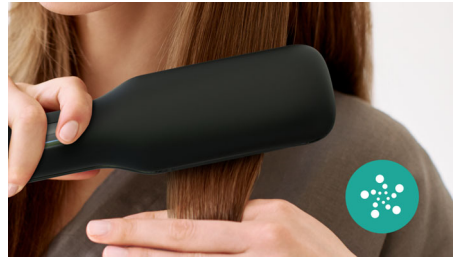


The UniTemp sensor protects your hair from being exposed to unnecessary high heat by providing a more consistent styling temperature for improved performance: Get the same results with a 20°C lower heat setting**. Create the perfect style with healthy-looking ends full of life.

Keratin infusion

Keratin is the hair's essential ingredient which makes them strong, healthy and gorgeous looking. The ceramic is enriched with keratin to even better take care of your hair.

Ionic Conditioning



Charged negative ions eliminate static, condition the hair and smooth down the hair cuticles to intensify the hair's shine and glossiness. The result is smooth, frizz-free hair with vibrant shine.

105mm long plates



The straightening plates have a professional length of 105mm, leading to faster and easier straightening.

Ceramic plates



The smooth ceramic coated plates prevent damage to your hair during styling with smooth gliding.

Digital temperature settings



Digital display with 11 temperature settings up to 230°C gives you absolute control to adjust temperature to your hair type for damage prevention.

Cool Tip



The tip of the styler is made from a special heat insulating material to keep it cool. You can safely hold it while you're curling to create beautiful curls, waves and bouncy styles.

Fast heat up time



This styler has a fast heat up time, being ready to use in 30 seconds.

1.8 m cord

Convenient to use thanks to the 1.8m power cord length.

Vivid Ends straightener
with SplitStop technology for split ends prevention, Ionic conditioning, Keratin infusion

BHS675/03

Specifications

Technical specifications

- Cord length: 1.8 m
- Heat-up time: 30 sec
- Heater Type: High-performance heater
- Maximum temperature: 230 °C
- Plate size: 25x105 mm
- Voltage: 110-240 V

Features

- Auto shut-off: After 30 minutes

- Ceramic coating
- Hanging loop
- Swivel cord

Caring technologies

- Ionic Care

Service

- Guarantee: 2 - Year Worldwide Guarantee



Issue date 2018-03-21

Version: 1.0.1

© 2018 Koninklijke Philips N.V.
All Rights reserved.

Specifications are subject to change without notice.
Trademarks are the property of Koninklijke Philips N.V.
or their respective owners.

www.philips.com

* after simulating 2 years of straightening usage at 200°C of average European, split-free hair
** hair temperature & consumer test compared with HP8344