

PHILIPS

Stand Steamer

ProTouch

Max 6 bar pump pressure

Up to 90g steam boost

No descaling needed

OptimalTEMP heated plate



GC625/26



Great results in just one stroke, no wet spots with innovative Dual Heating Technology

Thanks to the innovative Dual Heating technology, the new PerfectCare garment steamer ensures powerful steam performance with no wet spots for great results effortlessly.

Fast de-wrinkling for great results

- Dual Heating Technology
- OptimalTEMP heated plate, guaranteed no burns*
- Powerful & continuous steam
- Triple precision tips on steam plate for challenging areas
- Stable tilting board with quick dry cover

Ultimate convenience

- Maintenance free engine, no descaling needed*
- Easy steam selection (3 settings+ ECO) on handle
- Wheels for easy transportation

Reliable

- Automatically switches to standby mode for peace of mind
- Steam refreshes garments and kills 99.9% of bacteria*
- PVC free hose

Highlights

Dual Heating Technology



The innovative Dual Heating technology generates steam instantly at the base and reheats at the steamer head, for powerful penetrating steam, giving great results with no wet spots

OptimalTEMP heated steam plate



Steamer plate is actively heated to provide better de-wrinkling results with no wet spots. With OptimalTEMP technology, it guarantees no burns on all ironable fabrics.

Powerful & continuous steam



90g powerful steam boost penetrates deep into garments while 35g/min of continuous steam enables effortless wrinkle removal, for great de-wrinkling results.

Triple precision tips



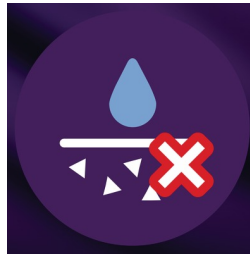
The triple precision tips on the steamer head enable you to reach the challenging areas, such as the collar, the shoulder, and the in-between buttons, giving you precise results.

Tilting board & quick dry cover



It can be tilted 30°, giving stable and comfortable support to make pleats and achieve crisp results. The shoulder shape board provides a better fit for garments. Board comes with a quick dry cover with enhanced steam permeability and breathability. It is durable with high heat resistance.

Maintenance free engine



Steamers need to be descaled regularly to ensure steam performance. Our new innovative engine prevents scale from building up, for long lasting steam performance.

Easy steam selection on handle



By pressing the steam selection button on the handle, you can easily change steam level for different fabrics - no need to bend down! Set your preferred steam level for optimal results on different fabrics. Use low steam for thinner fabrics and a more powerful setting for thicker fabrics and coats. Use ECO mode to save energy consumption.

Wheels for easy transportation



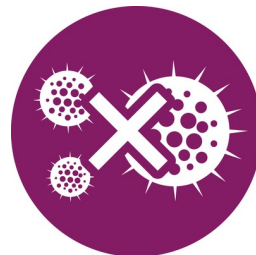
Wheels for easy transportation

Wheels enable user to tilt and drag the stand steamer from one place to another easily.

Auto shut off

The steamer automatically switches to standby mode when the water tank is empty, so you have peace of mind even if you forget to switch it off.

Kills 99.9% bacteria*



Hot steam refreshes garments and kills up to 99.9% bacteria*. Less frequent washing and dry cleaning saves time and money, and helps clothes last longer.

Specifications

Technology

For all ironable fabrics
No burns
OptimalTEMP technology

Fast crease removal

Continuous steam: 35 g/min
Power: 2200 W
Ready to use: 2 min
Steam boost: up to 90 g
Steam-on-demand
Variable steam: 3 levels
Vertical steam
Voltage: 220-240 V
Pressure Bar: Max 6 bar pump

Easy to use

Water tank capacity: 2000 ml
Detachable water tank
Power cord length: 1.8 m
Precision steam tip

Refill any time during use
Select steam level from handle
Special water inlet: For extra hygiene
Tap water suitable
Auto shut off
Save on all fabrics: Even delicates like silk
PVC Free Hose

Storage

Integrated wheels: For easy transportation

Accessories included

Adjustable pole
Glove for extra protection

Size and weight

Board size (WxHxL): 41 x 74.5 x 5.1 cm
Cover size (WxHxL): 42.2 x 75.7 x 6.3 cm
Foam layer thickness: Cover thickness : 6 mm mm
Ironing surface: 56.4 cm

Packaging dimensions (WxHxL): 46.5 x 51 x 61.5 cm

Product dimensions (WxHxL): Base dimensions : 32 x 45.2 x 34 cm

Total weight with packaging: 11.5 kg

Weight of board: 1.7 kg

Weight of iron: 0.69 kg

Weight of iron + base: 6.78 kg

Pole dimensions extended: Height from ground to shoulder tip of Hanger : 155 cm

Guarantee

2 year worldwide guarantee

Green efficiency

Energy saving mode

Product packaging: 100% recyclable

User manual: 100% recycled paper

