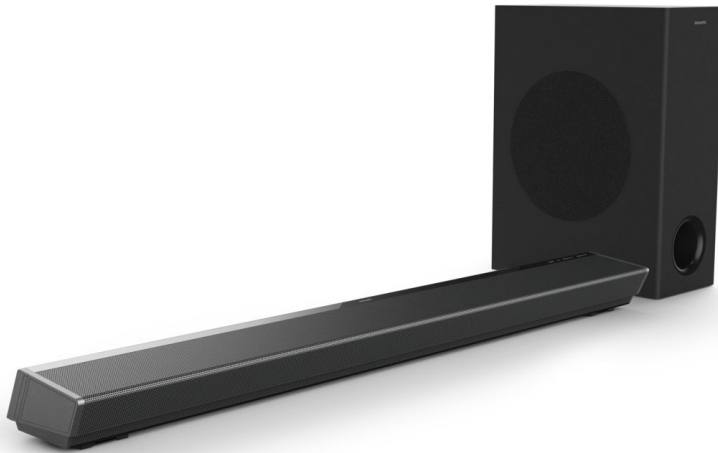


Philips Performance
Soundbar speaker

3.1 CH wireless subwoofer

Dolby Atmos®
2 HDMI In & HDMI out ARC
320W

TAPB603



For every thrilling moment

Experience cinematic sound from your sofa. This Dolby Atmos soundbar with wireless sub-woofer draws you deeper into the shows and movies you love. You'll hear the drama flow around you, and even overhead.

The thrill of cinema

- Dolby Atmos. Cinematic sound
- 3 channels: midrange drivers, and tweeters
- Central speaker for sparkling dialogue. Hear every word
- Wireless sub-woofer. Deeper bass
- 320 W output. Powerful sound

Any source. Every note.

- Robust metal grille for clear sound
- Bluetooth and USB connections
- Optical-in and audio-in
- 2x HDMI-in with 4K pass-through
- HDMI-out (ARC). Control the soundbar with your TV remote

See it. Hear it. Love it.

- Low-profile soundbar design. Slim-profile sub-woofer
- Place on your TV table, the wall, or any flat surface

PHILIPS

Specifications

Sound

- Speaker output power: 200W
- Subwoofer output power: 120W
- Speaker system output power: 320W

Loudspeakers

- Main unit speaker drivers: L: full range (48x90mm) + tweeter; R: full range (48x90mm) + tweeter; C: full range (52mm) x 2
- Subwoofer type: Active, Wireless subwoofer
- Subwoofer drivers: 1 x low frequency (165.1mm/6.5")

Connectivity

- Integrated Connections: Bluetooth
- Rear Connections: Digital optical in, HDMI IN 1, HDMI IN 2, USB, Audio in 3.5 mm jack, HDMI out (4K passthrough, ARC)

Supported Audio Formats

- Bluetooth: SBC
- HDMI ARC: Dolby Digital, Dolby Digital plus, LPCM 2ch
- HDMI IN1/IN2: Dolby Atmos, Dolby Digital, Dolby Digital plus, Dolby True HD, LPCM 2ch
- Optical: Dolby Digital, Dolby Digital plus, LPCM 2ch
- USB: MP3, WAV, WMA

Convenience

- EasyLink (HDMI-CEC): Audio Return Channel, Automatic audio input mapping, One touch standby, Remote Control-Passthrough

Design

- Wall mountable

Power

- Standby power consumption: Main unit: <0.5 W; Subwoofer: <0.5 W
- Subwoofer power consumption: 20 W
- Main unit power consumption: 25 W
- Main unit power supply: 100-240V AC, 50/60 Hz
- Subwoofer Power supply: 110-240 V~; 50-60 Hz

Dimensions

- Main Unit (W x H x D): 950 x 75 x 134 mm
- Subwoofer (W x H x D): 150 x 412 x 310 mm

Accessories

- Included accessories: 1 x CR2025 Battery, Power cord, Quick start guide, Remote Control, World Wide Warranty leaflet

Packaging dimensions

- Packaging type: Box
- Number of products included: 1
- Packaging dimensions (W x H x D): 18 x 45 x 106 cm
- Gross weight: 11 kg
- Nett weight: 8 kg
- Tare weight: 3 kg
- EAN: 48 95229 10235 4

Outer Carton

- Number of consumer packagings: 2
- Outer carton (L x W x H): 108.5 x 19.5 x 60 cm
- Gross weight: 23 kg
- Nett weight: 16 kg
- Tare weight: 7 kg
- GTIN: 1 48 95229 10235 1

PH Categorization

- SV - Soundbars: Essential Soundbars, Dolby Atmos Soundbars

Highlights

Dolby Atmos 3.1

Three channels reproduce height as well as depth, creating a virtual three-dimensional surround sound. Whether it's spaceships flying overhead or the crowd in an arena, you'll feel the drama flow above and around you.

Powerful sound

The crackle of laser-fire. The thunder of engines. From movies to sports, this 300 W Dolby Atmos-compatible soundbar lets you get more out of the content you love. Three channels liberate the sound of your favorite shows. The powerful, slimline wireless sub-woofer significantly enhances bass. Explosions will rumble, and music sounds deep and rich.

Crystal-clear dialogue

The central speaker in this soundbar ensures dialogue is crisp, clear—and beautifully balanced. You'll hear every word, whether you're in the corner seat or right in the middle of the room.

Your favorite tunes

Movie over? Time for a post-series-finale discussion? Once the on-screen drama has ended, switch the soundbar to Bluetooth and cue up a playlist. Or play your tunes straight from USB. You'll enjoy the same rich sound, whatever you love to listen to.

Distinctive design

The soundbar's slim profile and minimalist good looks make a statement in any home. The slim design of the powerful sub-woofer makes it easy to place.

Any source

Connect via HDMI, audio-in, USB, and more. 4K pass-through lets you connect 4K video sources directly to the soundbar.

