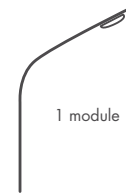


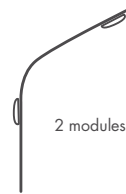
OVERALL INFORMATION	
Dimensions	H 7000 x W 250 x D 1530
Luminaire weight without batteries	150 kg
Material and paint treatment	Aluminum pole and arm - Powder paint (seafront and seaside on request)
Max Power	38W for 1 module
Nominal power	20W for 1 module
Indication for the implementation of a surge arrester	Category Electronic Equipment > IV
LED	
Lifetime	L80 > 100 000 hours @700mA@Tj=85°C
Manufacturer	LUMILEDS
Lumen/Watt efficiency	152 lm/W max. @350mA @Tj = 85°C - Bin V @4000K
Color T°:	3000K and 4000K - CRI 70
LIGHTING	
Outgoing nominal flow	2173 lm@4000K for 1 module
Optical performance	89%
Luminaire nominal efficiency	109 lm/W @4000K
Optics	ASYM 2.2 pathway type as standard
BATTERY	
Battery weight	11Kg
Technology	NIMH
Total power	528Wh
Voltage / Capacity	24V/22Ah
Nominal lifetime	7 years
PHOTOVOLTAIC PANNELS	
Number of panels - Technology	7 - Monocrystalline
Unit power	35W
Voltage	13,6V
IK panels	IK08
PROGRAMMING	
Smart Lum function	Cycles (lighting dimming according to a predefined schedule)
ELECTRONIC CARD	
Battery Management (BMS)	Yes
Solar Charger	Yes



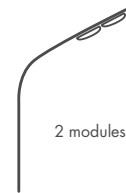
LED modules layout Side view



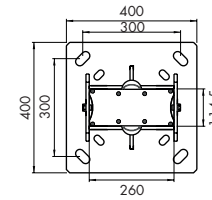
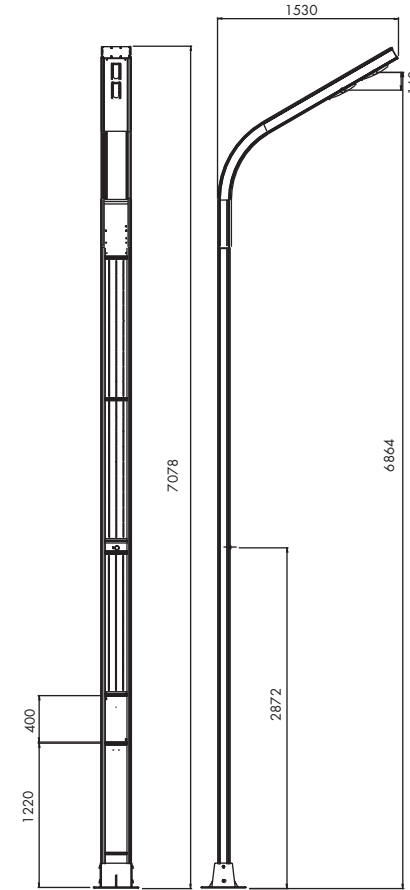
1 module



2 modules

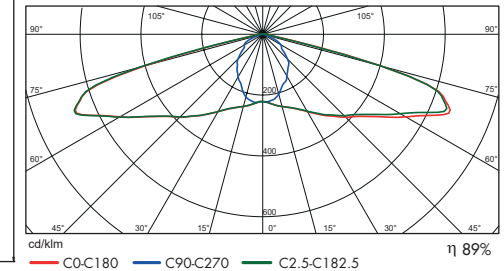


2 modules



Photometric curves

ASYM 2-2 optics



COMPLIANCE	
Standards and certifications	EN 60598-1 / 2-3 Lighting: General requirements and tests - Public lighting luminaires EN 62722-2-1 Performance of luminaires: Requirements for LED luminaires UTE C15-712-2 Practical guide - Stand-alone photovoltaic installations not connected to the public distribution network with battery storage EN 40-6 Specification for aluminum public lighting candelabra
OPERATING TEMPERATURE	
	Operating temperature range: -25°C to 80°C
INSTALLATION	
Installation mean	Sealing rods provided, specific according to the wind area See installation instructions
Battery location	Inside the pole as standard, buried according to the temperature of use
AUTONOMY	
	According to location and orientation of the luminaire - See table of use