

# PHILIPS

IPL - Hair removal device

Lumea Essential

For use on body and face

10 minutes to treat lower legs

>200,000 lamp flashes + pouch



BRI863/60



## Easy, long term hair reduction

Philips Lumea Essential works wonders to prevent the reappearance of hair on face and body. Gentle pulses of light, applied regularly, keep skin silky-smooth every day.

### Long lasting hair removal with IPL technology

- Adapted for safe use in the comfort of your own home
- Enjoy smooth skin every day
- Effortlessly effective
- Suitable for different hair and skin types

### Safe and effective on face and body

- Safe and effective even on sensitive areas
- Skin Tone Sensor
- For ease and comfort of use
- 50% faster for shorter treatment time\*
- Gentle treatment
- Five adjustable light energy settings

### Maximum freedom, minimum hassle

- Slide and Flash mode for a more convenient application
- No replacement parts, no hidden costs

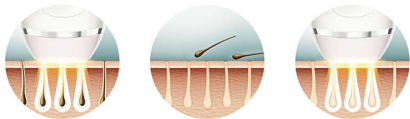
# Highlights

## IPL technology



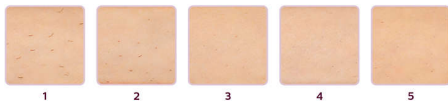
Philips Lumea uses an innovative light-based technology called IPL (Intense Pulsed Light), derived from the technology used in professional beauty salons. Philips has adapted this technology for effective use in the safety and comfort of your own home. Philips worked closely with skin experts to develop this technology. For more than 10 years Philips carried out extensive consumer research on IPL technology with more than 2000 women.

## Enjoy smooth skin every day



Philips Lumea applies gentle pulses of light to the hair root. As a consequence, the amount of hair your body grows gradually decreases. Repeating the treatment leaves your skin beautifully hair free and touchably smooth.

## Effortlessly effective



Our clinical studies have shown significant hair reduction in as little as four bi-weekly treatments resulting with smooth hair free skin. To maintain these results, simply repeat the treatment when needed. Time between treatments may vary based on your individual

hair regrowth. - To enlarge this picture, please click on the image in the image gallery on the top of this page

## Suitable hair and skin types



Philips Lumea works effectively on (naturally) dark blonde, brown and black hairs. As with other light-based treatments, Philips Lumea is NOT effective on red, light-blonde or white/grey hair. This product is also NOT suitable for dark skin.

## Application areas



Use with confidence to remove hair on face (upper lip, chin ) and body parts including legs, arm pits, bikini area, belly and arms.

## Skin Tone Sensor



For extra safety the integrated skin tone sensor measures the treated skin complexion at the beginning of each session and occasionally

during the session. If it detects a skin tone that is too dark for this product it will automatically stop emitting pulses.

## 5 light energy settings



Philips Lumea has five adjustable light energy settings to ensure gentle but effective treatment. Used correctly, Philips Lumea's IPL treatment is safe and gentle to use even on sensitive skin and sensitive body areas.

## SmartSkin sensor

Philips Lumea Essential detects your skin tone and advises you on the suitable light energy setting

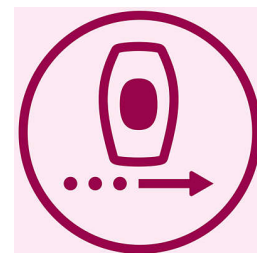
## 50% faster\*

Larger window with optimized design for faster treatment and better visibility\*

## Gentle treatment

Gentle on your skin.

## Slide and Flash mode



Main application mode enables sliding motion for a more convenient and continuous application.

# Specifications

## Technical specifications

**High performance lamp:** Delivers <gt/> 200,000 flashes

## Application areas

**Body areas:** Arms, Legs, Belly, Bikini, Armpits

**Face areas:** Chin, Sideburns, Upper lip

## Items included

**Instructions for use:** User manual

**Storage:** Pouch

**Adapter:** 12V / 550mA, 400V / 60W

## Power

**Voltage:** 100-240 V

## Safety and adjustable settings

**Integrated UV filter:** Protects skin from UV light

**5 light energy settings:** Adjustable to your skin type

**Integrated safety system:** Prevent unintentional flashing

**Skin Tone sensor:** Detects your skin tone

## Service

**Warranty:** 2 years global warranty

## Application time

**Lower leg:** 5 min

**Armpit:** 1 min

**Bikini line:** 1 min

**Face areas:** 1 min

## Application mode

**Slide and Flash:** For easy motion application

**Corded / cordless use:** Corded

**Stamp and Flash:** For treatment on curvy areas

