

# PHILIPS

Advanced wet and  
dry epilator

Satinelle Advanced

Grips hairs 4x shorter than wax

Our widest epilation head yet

Use in or out the shower

5 attachments and 2 speed  
settings



BRE635/00



## Our fastest epilation, even on the finest of hairs 2 hair removal routines

Our fastest ever epilator has unique ceramic discs that rotate at a greater speed than ever before and firmly grip fine and short hairs. Enjoy weeks of satin smooth skin and treat your body areas with tailored hair removal methods.

### Exceptional results

- Epilation head in unique ceramic material for better grip
- Extra-wide epilator head

### Easy and effortless use

- First epilator with S-shaped handle
- Cordless wet and dry for use in bath or shower
- Opti-light helps you target and remove even the trickiest hairs.

### Personalised body and face care routines

- Shaving head and trimming comb for a close shave
- Facial area and delicate area cap to remove unwanted hairs
- Includes skin stretcher

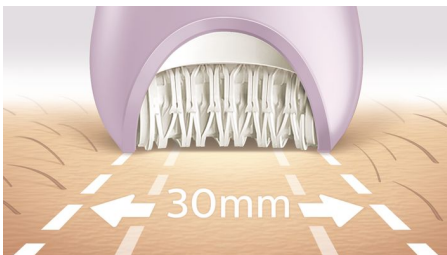
# Highlights

## Our fastest epilation ever



Our epilator head is unique in being made from a textured ceramic surface that gently extracts even the finest hairs and those 4x shorter than wax can extract. Now with faster disc rotation than ever before (2200 RPM) for our fastest hair removal.

## Extra-wide epilator head



Extra-wide epilator head covers more skin with every stroke for faster hair removal.

## Ergonomic S-shaped handle



The ergonomic S-shaped handle is easy to steer for maximum control and better reach with natural and precise movements, all over your body.

## Cordless wet and dry usage



Designed with an anti-slip grip, ideal for use with water. Enables a more comfortable, gentle experience in your shower or bath. You can use it cordless for best convenience.

## Opti-Light



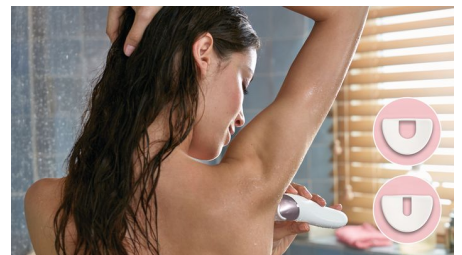
Opti-light helps you target and remove even the trickiest hairs

## Shaving head and trimming comb



The shaving head provides a close shave and more gentleness in all body areas. It comes with a trimming comb to style your bikini area.

## Facial and delicate area cap



For more gentleness in all body areas, it includes a facial area cap to easily remove unwanted facial hairs and a delicate area cap for underarm and bikini hair.

## Skin stretcher



Skin stretcher cap tightens skin during epilation.

# Specifications

## Ease of use

Cordless  
Handle: S-shaped handle  
Wet and dry use  
Opti-light

## Accessories

Shaving head  
Skin stretcher cap  
Facial area cap  
Trimming Comb  
Delicate area cap  
Pouch: Basic pouch  
Cleaning brush

## Performance

Epilation system: Patented epilation system  
Epilator head: Extra wide  
Epilation discs: Ceramic discs

## Technical specifications

Voltage: 15 V / 5.4 W  
Tweezing action speed 1: 64,000 per minute  
Tweezing action speed 2: 70,400 per minute  
Number of tweezers: 32

## Power

Battery Type: Lithium-ion  
Usage time: up to 40 minutes  
Charging: 1.5-hour charging time  
Quick charge

## Features

Speed settings: 2 settings

