

Philips StyleCare
Multi-Styler

10+ styles in a box

5 attachments & accessories
Style Guide
OneClick Technology

Click on your style

10+ looks with style guide

Every day a different look! From perfectly polished, straight and curly hair to updos and more, create more than 10 styles with the new Philips Multi-Styler with style guide.

Beautifully styled hair

- 80mm straightener for sleek results
- 25mm curling barrel for tight to loose curls
- Style guide and 3 useful hair accessories for 10+ styles
- Professional high heat for perfect results

Ease of use

- OneClick Technology for quick and easy attachment changing
- Fast heat up time, ready to use in 60 sec
- Cool tip for easier and safer use
- 1.8 m power cord
- Swivel cord to prevent tangled wires

Care for your hair

- Protective ceramic coating



BHH811/03

PHILIPS

Highlights

Straightener for sleek results



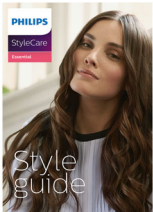
80mm straightening plates for perfect sleek results.

Curler for fabulous curls



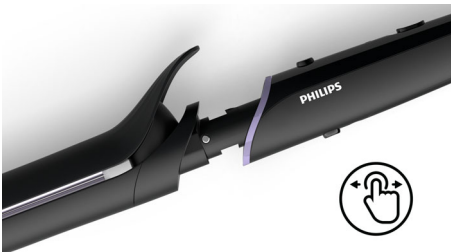
25mm curling barrel for perfect tight to loose curls.

3 versatile hair accessories



Including a style guide to create 10+ styles, 2 elastic bands for easy hairstyling and a hair loop to experiment with your style.

OneClick release technology



Changing attachments has never been quicker or easier with the multi-styler's OneClick

design. Simply click on and push the button, holding the cool tip, to release.

Up to 210°C temperature



This high temperature enables you to change the shape of your hair and gives you that perfect look you want.

Fast heat up time



This styler has a fast heat up time, being ready to use in 60 seconds.

Gentle on your hair



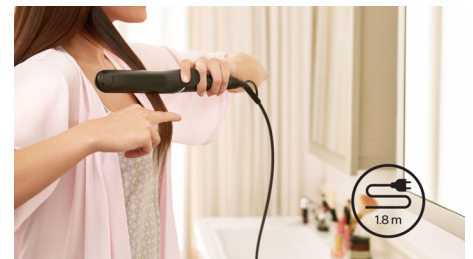
Protective ceramic coating ensures even heat distribution and less hair damage for shiny and soft hair.

Cool tip



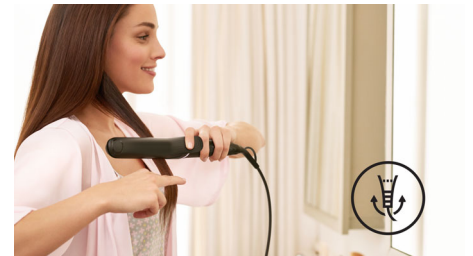
The tip of the styler is made from a special heat insulating material to keep it cool; you can safely hold it while you're styling for optimal ease of use.

1.8 m cord



Convenient to use thanks to the 1.8m power cord length.

Swivel cord



Useful swivel cord technology rotates the cord to prevent tangled wires.

Specifications

Attachments

- Curler
- Straightener

Accessories

- Style guide: with 10 easy to create styles
- Elastic band: 2
- Hair loop

Features

- Coating of heated parts: Ceramic
- Barrel diameter: 25 mm
- Straightener size: 30x80 mm
- Cool tip

- Swivel cord
- Storage hook
- OneClick release technology

Technical specifications

- Styling temperature: Up to 210°C
- Heater type: PTC
- Heating time: 60 sec
- Cable length: 1.8 m
- Plate size: Curler 90 mm
- Voltage: 110-240V

Service

- 2-year worldwide guarantee



Issue date 2017-07-30

Version: 2.2.1

EAN: 08 71010 38145 80

© 2017 Koninklijke Philips N.V.
All Rights reserved.

Specifications are subject to change without notice.
Trademarks are the property of Koninklijke Philips N.V.
or their respective owners.

www.philips.com