

Philips Daily Collection  
Food processor

**650 W**

2 speeds + pulse  
2.1 l bowl  
Accessories for + 15 functions

**HR7627/01**



## Maximum variety of recipes, minimum effort

Create homemade breads, cakes, drinks and more

This Philips Daily collection Food Processor has a compact design including a 2.1 l bowl and a variety of high-performance accessories. Preparing delicious homemade food has never been so easy!

### **Powerful precision**

- PowerChop technology for superior chopping performance

### **Maximum variety of recipes**

- Emulsifying tool for cream and egg whites
- High-performance stainless steel disc inserts
- Sharp and strong stainless steel S blade for chopping
- Up to 5 portions in one go

### **Easiest assembly, use and cleaning**

- 2 speed settings and pulse for maximum control
- 40% larger feeding tube (compared to Philips HR7625)
- 650-Watt motor for powerful processing
- Dishwasher-safe accessories
- No mess from the centre of the bowl due to lack of inner shaft

Food processor  
650 W 2 speeds + pulse, 2.1 l bowl, Accessories for + 15 functions

HR7627/01

## Highlights

### 2 speed settings and pulse



For best results, use the low speed setting (speed 1) to whip cream, beat eggs, create pastries and bread dough. The higher speed setting (speed 2) is well suited to chop onions and meats, blend soups and smoothies or shred, slice, grate or rasp vegetables.

### 40% larger feeding tube



The new Philips Daily collection Food Processor comes with a feeding tube that is 40% larger than the previous HR7625 model, saving time on pre-cutting fruits and vegetables

### Powerful processing

# 650 W

This Philips Food Processor offers a powerful motor providing power and control to prepare all your favourite recipes.

### Up to 5 portions in one go



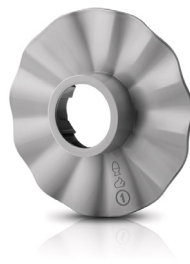
The generous 2.1-l bowl (1.5-l working capacity) enables you to blend up to 5 portions of soup in one go.

### Dishwasher-safe accessories



All accessory parts of your Philips food processor can be put on the top rack of your dishwasher for easy cleaning.

### Emulsifying tool



The perfect tool for whipping, whisking or emulsifying eggs or whipped cream. For best volume increase and fluffiness, use the low speed setting. Creating delicious desserts or mayonnaise has never been easier!

### Stainless steel disc inserts



Simply select the right stainless steel disc insert to prepare your favourite ingredient and click it onto the disc holder. Performance has been tested extensively to provide the best slicing and shredding results.

### PowerChop technology



## PowerChop

PowerChop technology is a combination of blade shape, cutting angle and inner bowl that provides a superior chopping result for both soft and hard ingredients. It is also perfect for making purées and mixing your cake batters!



[asimpleswitch.com](http://asimpleswitch.com)

### Philips Green Logo

Philips Green Products can reduce costs, energy consumption and CO2 emissions. How? They offer a significant environmental improvement in one or more of the Philips Green Focal Areas — Energy efficiency, Packaging, Hazardous substances, Weight, Recycling and disposal and Lifetime reliability.

# Specifications

## General specifications

- Integrated cord storage
- Non-slip feet
- Speeds: 2 + pulse
- Product size (LxVxH): 244 x 244 x 377 mm
- RPM-Bowl(max): Up to 1900 rpm
- RPM-Bowl(min): Up to 1500 rpm
- Bowl max working capacity: 1.5L (dry/liquid)
- Bowl capacity: 2.1 l
- Bowl max working capacity.: 500g (Flour)

## Accessories

- Emulsifying disc
- Kneading tool
- Number of inserts/discs: 3
- Stainless steel chopping knife: Beating, chopping, crumbling, cutting, folding in, mashing, mincing
- Stainless steel S-blade
- Disc insert: granulating

- Disc insert: shredding(coarse)
- Disc insert: slicing(fine)

## Design specifications

- Bowl including lid: SAN
- Housing: ABS
- Kneading tool: PP
- Pusher: SAN
- Speed knob: ABS
- Disc inserts, chopping knife: Stainless steel
- Knife holder: PP

## Technical specifications

- Frequency: 50/60 Hz
- Power: 650 W
- Safety: Lid and bowl detection, mechanical 1.5 sec brake
- Voltage: 220-240 V



Issue date 2016-01-29

Version: 5.2.1

EAN: 08 71010 35907 74

© 2016 Koninklijke Philips N.V.  
All Rights reserved.

Specifications are subject to change without notice.  
Trademarks are the property of Koninklijke Philips N.V.  
or their respective owners.

[www.philips.com](http://www.philips.com)