



IPL - Hair removal device

- With unique curved attachments
- Armpits, bikini, body, face
- With SmartSkin sensor
- Both cordless and corded use

BRI956/60

Experience hair-free smoothness for up to 8 weeks*

Unique attachments designed for optimal results

The world's first IPL with unique curved attachments is designed for optimal results all over. Philips Lumea Prestige is also the most effective IPL solution offering cordless and corded use and a SmartSkin sensor.

Benefits

Continuous smooth skin with Lumea IPL technology

- Derived from professional IPL, developed with dermatologists
- Proven effectiveness
- Suitable for a wide variety of hair and skin types
- Both cordless and corded functionality

Specialized treatment of different body areas

- Uniquely curved attachments for different body areas
- Face attachment with precise design and extra face filter

- Armpits attachment medium size, curved-out design for armpit
- Bikini attachment, curved with transparent filter for bikini
- Body attachment with large, curved-in design for large areas

Maximum freedom, minimum hassle

- With SmartSkin sensor
- No replacement parts, no hidden costs

PHILIPS

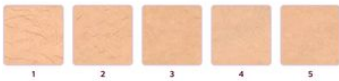
Features

Lumea prevents hair regrowth**



Philips Lumea uses an innovative light based technology called Intense Pulsed Light (IPL) to break the cycle of hair regrowth. Gentle pulses of light are applied at the root and, after several treatments, hair is prevented from growing back. IPL technology has been available in specialist salons since 1997. Philips Lumea, derived from this professional IPL technology, makes it possible for you to treat hair easily and effectively at home. Philips Lumea Prestige is the culmination of 14 years of research and development in collaboration with leading dermatologists.

Proven effectiveness



Objective studies show significant hair reduction in as little as 3 to 4 bi-weekly treatments, resulting in smooth, hair-free skin. To maintain results touch-up every 4 to 8 weeks. - To enlarge this picture, please click on the image in the image gallery on the top of this page.

Suitable hair and skin types



Philips Lumea Prestige works effectively, easily and safely on a wide variety of hair and skin types. It works on naturally dark blonde, brown and black colored hairs and on skin tones from very white to dark brown. As with other IPL based treatments, Philips Lumea cannot be used to treat white / grey, light blonde or red hair and is not suitable for very dark skin. This is due to the high contrast required between the pigment in hair color and pigment in the skin tone.

Treatment of body areas



Inspired by the uniqueness of each body area, Philips Lumea Prestige is the only IPL device to offer uniquely curved attachments designed for optimal results on different body areas. Attachments differ by combinations of shape, window size and filter. This Philips Lumea Prestige offers specialized treatment on body (legs, arms, stomach) and face (upper lip, chin), bikini and armpits.

Face attachment



It has its own specially designed extra integrated filter and a small, flat window for gentle and precise use on upper lip, chin and jawline - 2 cm² window size. 84% of women satisfied with hair reduction on face.***

Armpits attachment



It comes in a specially curved design to treat hard-to-reach underarm hairs - 3 cm² window size. 86% of women satisfied with hair reduction in underarms.***

Bikini attachment



It is specially designed for effective treatment of bikini hair. It is curved and has an extra transparent filter. Hair in this area tends to be stronger and thicker than leg hair - 3 cm² window size. 78% of women satisfied with hair reduction in bikini area.***

Body attachment



Large, curved-in design to follow body contours thus effectively covering areas like legs, arms, stomach. Also, enables fast treatment on large body areas thanks to the largest treatment window (4.1 cm² window size). 83% of women satisfied with hair reduction on legs.***

SmartSkin sensor



Philips Lumea Prestige has 5 energy settings and makes it easy for you to choose the right one thanks to the Smart Skin sensor. The SmartSkin sensor advises the best setting for your skin tone, anytime you want.

Lumea Prestige

Both cordless and corded use



Philips Lumea Prestige is the IPL device that can be used with or without cord for complete convenience. Use cordless for full freedom of movement and plug in when needed for treatment with NO interruptions.

No replacement parts needed



Philips Lumea is a complete solution that comes ready to work, straight out of the box. No refill cartridges or gels needed.

Specifications

[field not found 'disclaimer_text']

Application areas

Body areas	Arms Legs Stomach
Face areas	Chin Upper lip Jawline
Sensitive areas	Armpits Bikini

Technical specs. attachments

Body treatment attachment	Shape: Convex curved Window size: 4.1 cm ²
Face treatment attachment	Shape: Flat Window size: 2 cm ² , extra filter
Armpits treatment attachment	Shape: Concave curved Window size: 3 cm ²
Bikini treatment attachment	Shape: Concave curved Window size: 3 cm ² , extra filter

Application mode

Slide and Flash	For quick application
Stamp and Flash	For treatment on small areas
Corded / cordless use	Both cordless and corded use

Safety and adjustable settings

Integrated UV filter	Protects skin from UV light
5 light energy settings	Adjustable to your skin type
Integrated safety system	Prevent unintentional flashing
Skin Tone sensor	Detects your skin tone
SmartSkin sensor	The right setting on demand

Application time

Lower legs	8,5 min
Armpit	2,5 min
Bikini line	2 min
Face areas	1,5 min

Technical specifications

High performance lamp	Delivers > 250,000 flashes
-----------------------	----------------------------

Power

Voltage	100-240 V
---------	-----------

Items included

Instructions for use	User manual
Storage	Luxurious pouch
Adapter	19.5V / 4000mA

Service

Warranty	2 years global warranty
----------	-------------------------

Packaging dimensions

Height	19.00 cm
Width	26.50 cm
Depth	14.00 cm
Nett weight	1.00 kg
Gross weight	1.64 kg
EAN	08710103779353
Number of products included	1
Country of origin	SI
Harmonised Systems Code	854370

Outer Carton

Length	28.90 cm
Width	19.90 cm
Height	28.10 cm
Gross weight	3.47 kg
EAN	18710103779350
Number of consumer packagings	2

* Measured on legs, after the initial 4-5 treatments, individual results vary

** Up to 92% hair reduction after 3 treatments when following the treatment schedule, measured on legs, individual results may vary

*** Study conducted in Netherlands and Austria, 46 women, after 3 treatments on armpits, bikini, legs, after 2 treatments on face



data subject to change
2017, January 12

Version: 3.1.1
EAN: 08710103779353

© 2017 Koninklijke Philips N.V.
All rights reserved.

Specifications are subject to change without notice. Trademarks are the property of Koninklijke Philips N.V. or their respective owners.

www.philips.com